

A-FIG 62

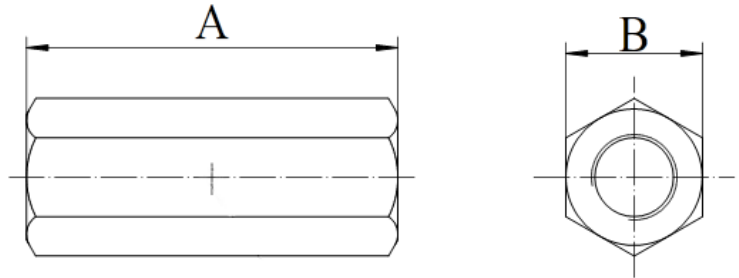
Zinc

ROD COUPLING

FUNCTION: Designed to provide a means of connecting two lengths of rod with equal diameters.

MATERIAL: Carbon Steel

FINISH: Zinc Electro-Galvanized



Rod Size	Specification Data		Rec. Max. Load (lbs.)	Approx. Wt. Per 100 (lbs.)
	A	B		
3/8	1 3/4	9/16	730	11
1/2	1 3/4	11/16	1350	10
5/8	2 1/8	13/16	2160	18
3/4	2 1/4	1	3230	28
7/8	2 1/2	1 1/4	4480	58
1	2 1/2	1 1/4	5900	46
1 1/4	3	1 5/8	6660	140
1 1/2	4	2	7000	196

This specification sheet is for reference only. Aimco International Group Corp. reserves the right to make changes to the design without prior notice.