

A-FIG 406	Plain
A-FIG 406Z	Zinc
A-FIG 406H	HDG

SMALL MOUTH BEAM CLAMP

FUNCTION: Designed for attaching hanger rod to the flange of a beam or bar joist, where flange thickness does not exceed 3/4".

APPROVALS: Complies with Manufactures' Standardization Society (MSS) SP-58 & SP-69 (Type 19). Complies with Federal Specifications A-A-1192A (Type 19).

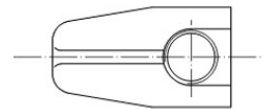
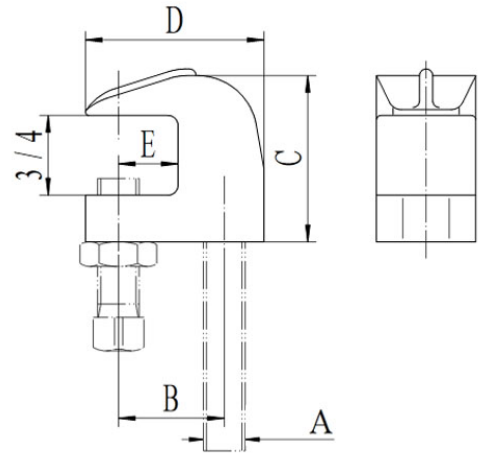
CERTIFICATIONS: Complies with Underwriters' Laboratories (UL) & (cUL) (EX16266, 406), (EX16204, JKL), Factory Mutual (FM), sizes 3/8" - 1/2" UL, cUL, FM approved

MATERIAL: Malleable Iron, with hardened steel set screw

FINISH: Available in Plain, Zinc Electro-Galvanized, Hot-Dip Galvanized

NOTE: Maximum recommended set screw torque value for 3/8"-16 set screw size is 60 in.-lbs. (nm 6.8). Caution should be taken not to over tighten set screw.

Set screw must be tightened and torqued onto the sloped side of the I-beam. Recognizing that torque wrenches are generally not used or available on many job sites, the set screw should be tightened so it contacts the I-beam. and then an additional 1/4" to 1/2" turn added.



Rod Size A	Specification Data				Set Screw Size	Max. Pipe Size	Rec. Max. Load (lbs.)	Approx. Wt. Per 100 (lbs.)
	B	C	D	E				
3/8	7/8	1 1/2	1 5/8	1/2	3/8-16	4	610	33
1/2	1	1 1/2	1 11/16	1/2	3/8-16	4	1130*	34
5/8	1 1/16	1 1/2	1 7/8	5/8	3/8-16	5	1130*	39
3/4	1 5/16	1 3/4	2 3/8	5/8	3/8-16	6	1130*	63
7/8	1 5/16	1 3/4	2 3/8	5/8	1/2-13	8	1130*	60

*750 if inverted

This specification sheet is for reference only. Aimco International Group Corp. reserves the right to make changes to the design without prior notice.