

CENTER BEAM CLAMP

A-FIG 410	Plain
A-FIG 410Z	Zinc

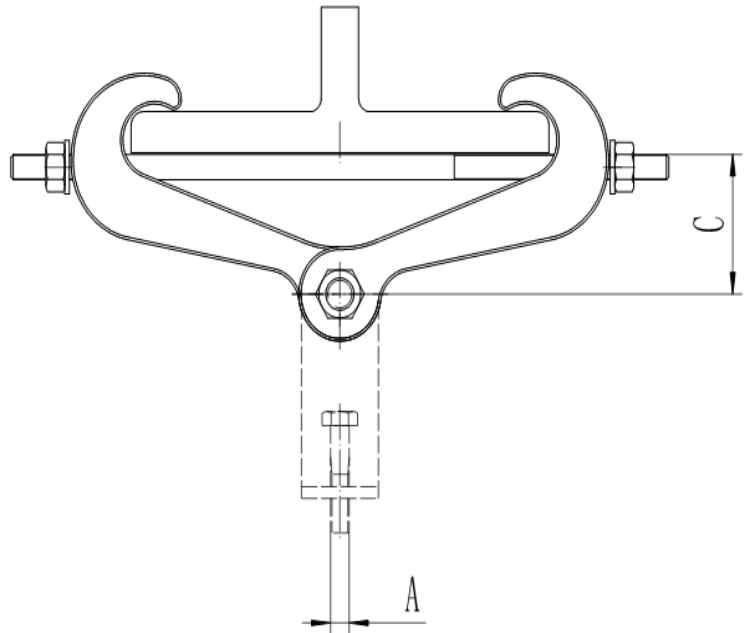
FUNCTION: Designed to be used in the suspension of a hanger rod from the center of an I-beam. The clamp's design allows the load to be distributed equally on either side of the beam. The clamp is adjustable from 2 3/8" to 7", and can be used with flange thicknesses up to 0.60". A-FIG 410 is usually used in conjunction with A-FIG 411 Extension Piece. An additional 1" or more of vertical adjustment is obtained when used with A-FIG 411 Extension Piece.

APPROVALS: Complies with Manufactures' Standardization Society (MSS) SP-58 & SP-69 (Type 30). Complies with Federal Specifications A-A-1192A (Type 30).

MATERIAL: Malleable Iron, with carbon steel hardware

FINISH: Available in Plain and Zinc Electro-Galvanized

NOTE: Order A-FIG 411 Extension Piece separately if required



A (7/8 Max. Rod)	Specification Data							Rec. Max. Load (lbs.)	Approx. Wt. Per 100 (lbs.)
	C Rod Take-Out for Width of Beam Flange						Bolt Dia.		
	2 3/8	3	4	5	6	7			
3/8 - 7/8	3 1/2	3 7/16	3 5/16	2 15/16	2 9/16	1 7/8	7/16	1365	249

This specification sheet is for reference only. Aimco International Group Corp. reserves the right to make changes to the design without prior notice.