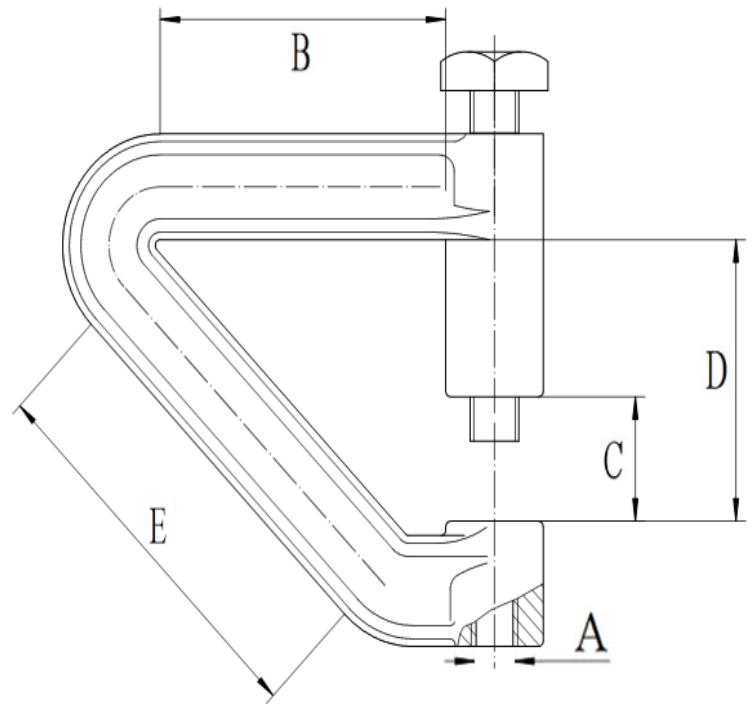


A-FIG 404	Plain
A-FIG 404Z	Zinc

PURLIN CLAMP



FUNCTION: Designed for use with large-lip rolled steel purlins to eliminate the need to modify steel purlin for standard C-Clamp. Supports 45° flanges up to 2" long, and 90° flanges up to 1 1/2" high.

APPROVALS: Complies with Manufactures' Standardization Society (MSS) SP-58 & SP-69 (Type 23). Complies with Federal Specifications A-A-1192A (Type 23).

MATERIAL: Malleable Iron, with hardened steel set screw

FINISH: Available in Plain and Zinc Electro-Galvanized

Rod Size A	Specification Data					Rec. Max. Load (lbs.)	Approx. Wt. Per 100 (lbs.)
	B	C	D	E	Max. Pipe Size		
3/8	1 1/4	15/16	1 5/8	1 13/16	4	400	82

This specification sheet is for reference only. Aimco International Group Corp. reserves the right to make changes to the design without prior notice.