

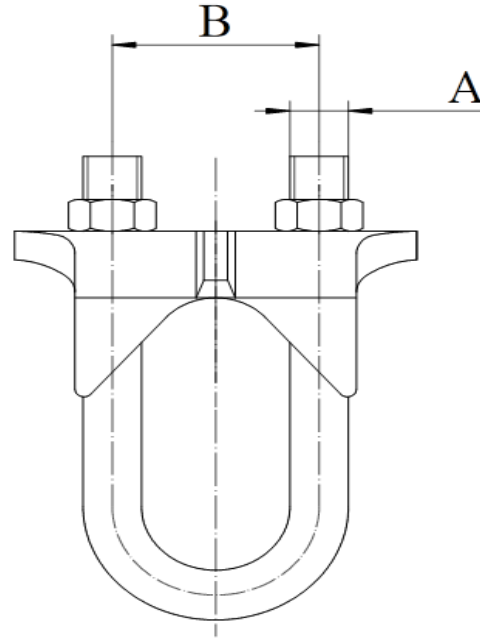
A-RA	HDG
A-RASS	SS

RIGHT ANGLE PIPE AND CONDUIT CLAMP

FUNCTION: Designed for anchoring pipe or conduit at a right angle to structural members.

MATERIAL: Available in Malleable Iron with carbon steel U-bolt and nuts, and Stainless Steel with Stainless Steel U-bolt and nuts.

FINISH: Available in Hot-Dip Galvanized and Stainless steel



Pipe and Conduit Size	Specification Data		Flange Thickness	Rec. Max. Load (lbs.)	Approx. Wt. Per 100 (lbs.)
	Rod Size A	B			
3/8	1/4	1 11/16	3/4" Max	200	33
1/2	5/16	2	3/4" Max	250	41
3/4	5/16	2 5/16	3/4" Max	300	42
1	5/16	2 5/8	3/4" Max	400	47
1 1/4	5/16	2 7/8	3/4" Max	400	54
1 1/2	5/16	3 1/4	3/4" Max	500	57
2	3/8	3 7/8	3/4" Max	600	85
2 1/2	3/8	4 3/8	3/4" Max	700	106
3	3/8	5 1/8	3/4" Max	800	110
3 1/2	3/8	5 1/2	3/4" Max	900	128
4	3/8	6	3/4" Max	1000	140

This specification sheet is for reference only. Aimco International Group Corp. reserves the right to make changes to the design without prior notice.