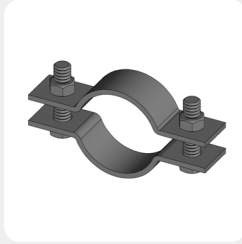
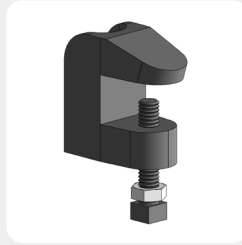
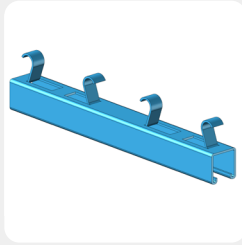
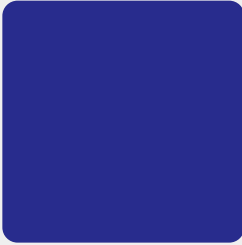
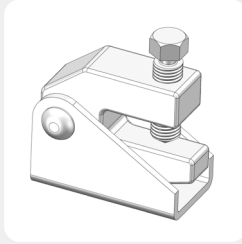
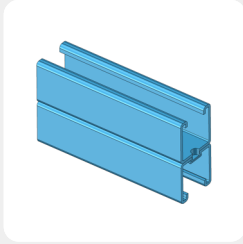
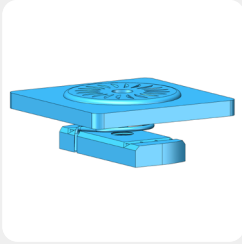
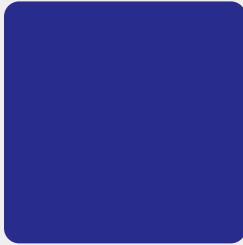
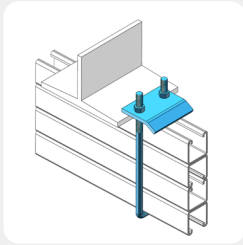
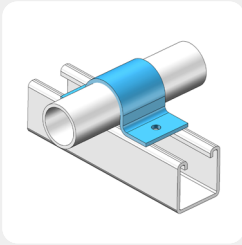


AIMCO*

INTERNATIONAL GROUP

Aiming to Build a Better Future



AIMCO

INTERNATIONAL GROUP



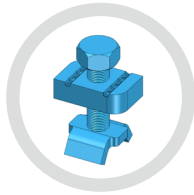
AIMING TO BUILD A BETTER FUTURE

Contents

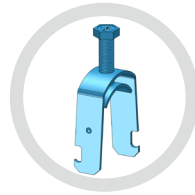
© STRUT CHANNELS & FITTINGS



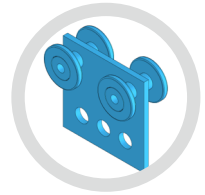
Strut Channels



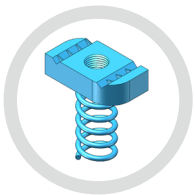
Rod Stiffeners &
Combo Nut Washer



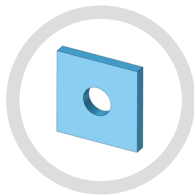
Strut Clamps &
Cushion Clamp



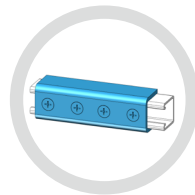
Trolleys &
Support



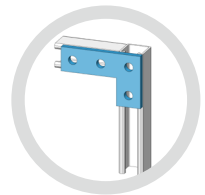
Spring Nuts



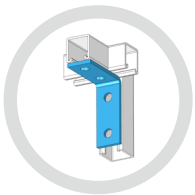
Square
Washers



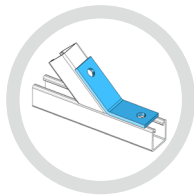
Splicing
Connections



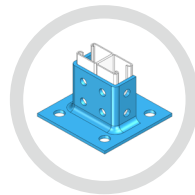
Conner
Connections



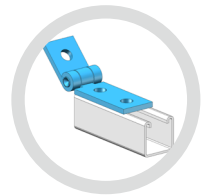
Crossing
Connections



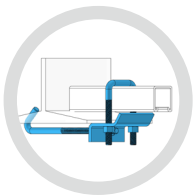
Angle
Connections



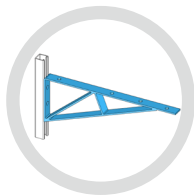
Post Bases



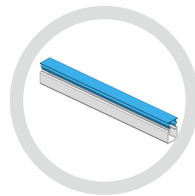
Braces &
Hinges



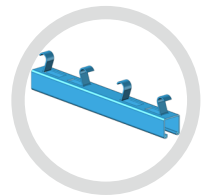
Beam Clamps



Brackets

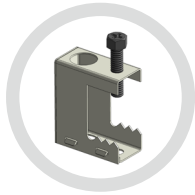


Electrical &
Raceway Fittings



Offset Connections
& Others

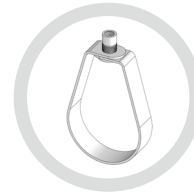
© PIPE HANGERS & SUPPORTS



Beam Clamps



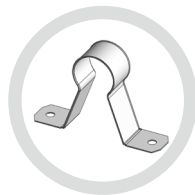
Clevis Hangers



Swivel Ring/Loop Hangers



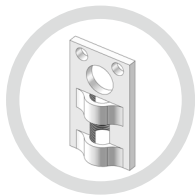
Riser & Pipe Clamps



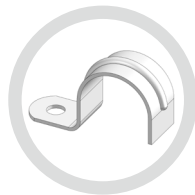
CPVC Clamps



Threaded Accessories



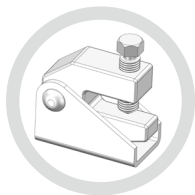
Attachments



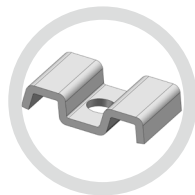
Pipe Stays & Straps



Pipe Roller & Supports



Seismic Protection



Other Products

STRUT CHANNELS & FITTINGS

STRUT CHANNELS

ROD STIFFENERS & COMBO NUT WASHER

STRUT CLAMPS & CUSHION CLAMP

TROLLEYS & SUPPORT

SPRING NUTS

SQUARE WASHERS

SPLICING CONNECTIONS

CORNER CONNECTIONS

CROSSING CONNECTIONS

ANGLE CONNECTIONS

POST BASES

BRACES & HINGES

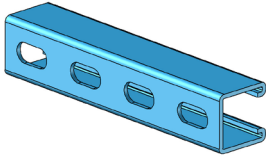
BEAM CLAMPS

BRACKETS

ELECTRICAL & RACEWAY FITTINGS

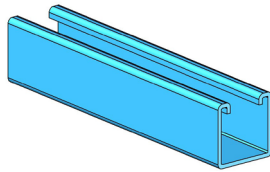
OFFSET CONNECTIONS & OTHERS

STRUT CHANNELS



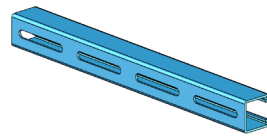
A20SL

1 5/8", Slotted, 12GA,
Pre-Galv/HDG/
Aluminum/304SS/316SS/
Epoxy/Fiberglass



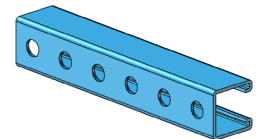
A20

1 5/8", Solid, 12GA,
Pre-Galv/HDG/
Aluminum/304SS/316SS/
Fiberglass



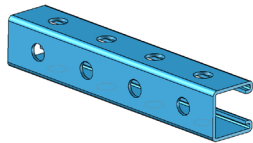
A20ES

1 5/8", Elongated Slot,
12GA, Pre-Galv



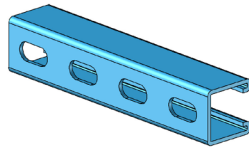
A20HS

1 5/8", Holes, 12GA, Pre-
Galv



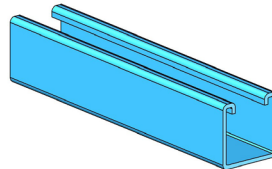
P20HS3

1 5/8", Holes Three Sides,
12GA, Pre-Galv



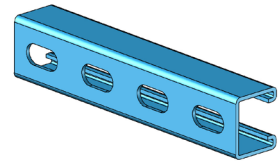
A40SL

1 5/8", Slotted, 14GA, Pre-
Galv



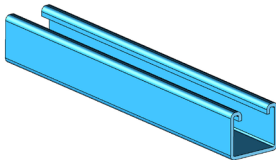
A40

1 5/8", Solid, 14GA, Pre-
Galv



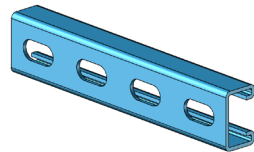
A30SL

1 3/8", Slotted, 12GA, Pre-
Galv



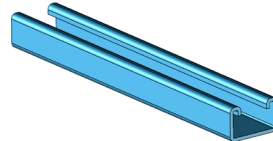
A30

1 3/8", Solid, 12GA, Pre-
Galv



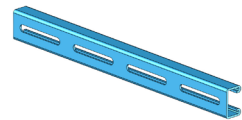
A50SL

1", Slotted, 12GA,
Pre-Galv/HDG/
Aluminum/304SS/316SS



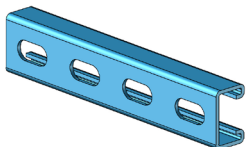
A50

1", Solid, 12GA,
Pre-Galv/HDG/
Aluminum/304SS/316SS



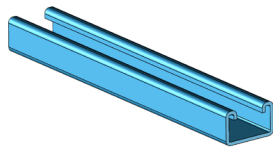
A50ES

1", Elongated Slot, 12GA,
Pre-Galv



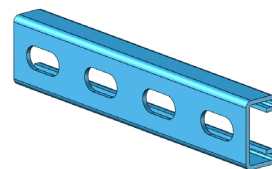
A55SL

1", Slotted, 14GA, Pre-Galv



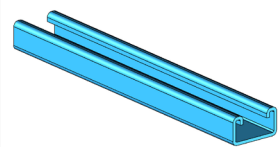
A55

1", Solid, 14GA, Pre-Galv



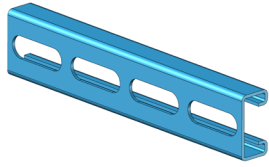
A45SL

7/8", Slotted, 12GA, Pre-
Galv



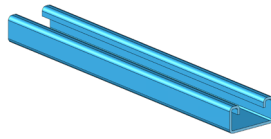
A45

7/8", Solid, 12GA, Pre-Galv



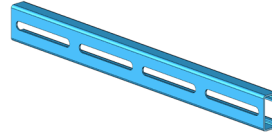
A70SL

13/16", Slotted,
14GA, Pre-Galv/HDG/
Aluminum/304SS/316SS



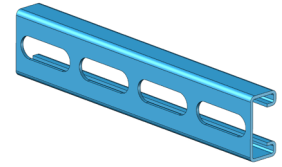
A70

13/16", Solid, 14GA,
Pre-Galv/HDG/
Aluminum/304SS/316SS



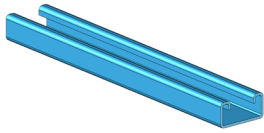
A70ES

13/16", Elongated Slot,
14GA, Pre-Galv



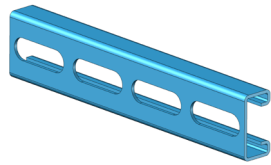
A75SL

13/16", Slotted, 16GA, Pre-
Galv



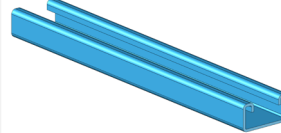
A75

13/16", Solid, 16GA, Pre-
Galv



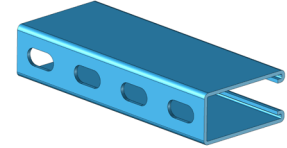
A74SL

13/16", Slotted, 12GA, Pre-
Galv



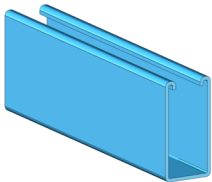
A74

13/16", Solid, 12GA, Pre-
Galv



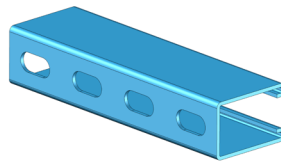
A90SL

3 1/4", Slotted, 12GA, Pre-
Galv/316SS



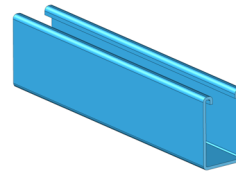
A90

3 1/4", Solid, 12GA, Pre-
Galv/316SS



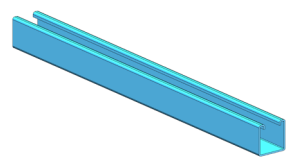
A10SL

2 7/16", Slotted, 12GA, Pre-
Galv/316SS



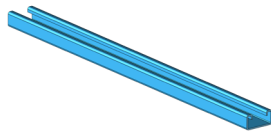
A10

2 7/16", Solid, 12GA, Pre-
Galv/316SS



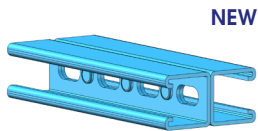
A18

13/16" x 13/16", Mini Solid,
19GA, Pre-Galv



A19

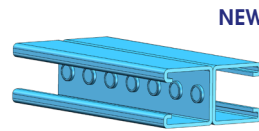
13/32" x 13/16", Mini Solid,
19GA, Pre-Galv



NEW

C20SLBBPJ

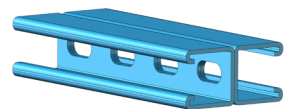
3 1/4", Slotted, Press Joined/
Clinched Back-to-Back,
12GA, Pre-Galv



NEW

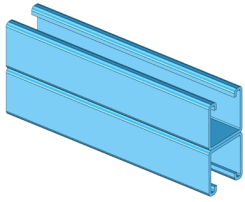
C20BBPJ

3 1/4", Solid, Press Joined/
Clinched Back-to-Back,
12GA, Pre-Galv



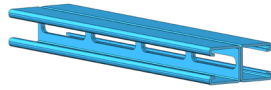
A20SLBB

3 1/4", Slotted, Back-to-
Back, 12GA, Pre-Galv/HDG/
Aluminum/304SS/316SS



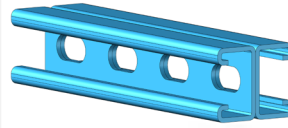
A20BB

3 1/4", Solid, Back-to-Back,
12GA, Pre-Galv/HDG/
Aluminum/304SS/316SS



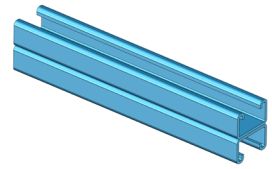
A20ESBB

3 1/4", Elongated
Slot, Back-to-Back,
12GA, Pre-Galv/HDG/
Aluminum/304SS/316SS



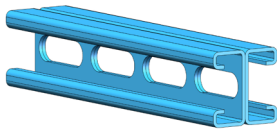
A50SLBB

2", Slotted, Back-to-Back,
12GA, Pre-Galv/HDG/
Aluminum/304SS/316SS



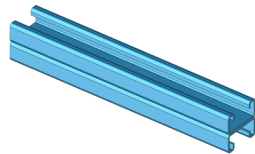
A50BB

2", Solid, Back-to-Back,
12GA, Pre-Galv/HDG/
Aluminum/304SS/316SS



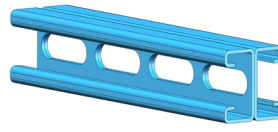
A70SLBB

1 5/8", Slotted, Back-to-
Back, 14GA, Pre-Galv/HDG/
Aluminum/304SS/316SS



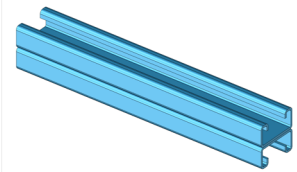
A70BB

1 5/8", Solid, Back-to-Back,
14GA, Pre-Galv/HDG/
Aluminum/304SS/316SS



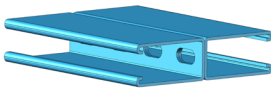
A74SLBB

1 5/8", Slotted, Back-to-
Back, 12GA, Pre-Galv



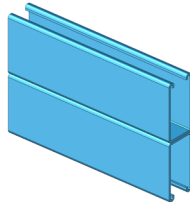
A74BB

1 5/8", Solid, Back-to-Back,
12GA, Pre-Galv



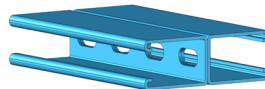
A90SLBB

6 1/2", Slotted, Back-to-
Back, 12GA, Pre-
Galv/316SS



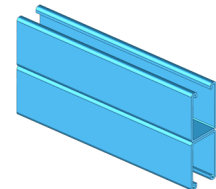
A90BB

6 1/2", Solid, Back-to-Back,
12GA, Pre-Galv/316SS



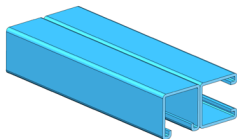
A10SLBB

4 7/8", Slotted, Back-to-
Back, 12GA, Pre-
Galv/316SS



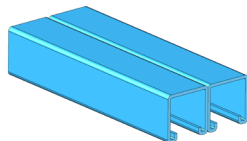
A10BB

4 7/8", Solid, Back-to-Back,
12GA, Pre-Galv/316SS



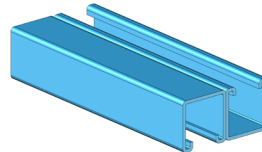
A20BTS

Solid/Slotted, Back-to-
Side, 12GA, Pre-Galv/HDG/
Aluminum/304SS/316SS



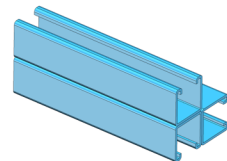
A20STS

Solid/Slotted, Side-to-Side,
12GA, Pre-Galv/HDG/
Aluminum/304SS/316SS



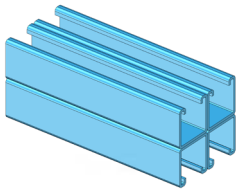
A20OUD

Solid/Slotted, One-
Up-One-Down, 12GA,
Pre-Galv/HDG/
Aluminum/304SS/316SS



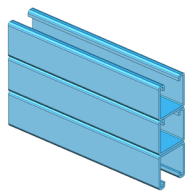
A20BBBS

Solid/Slotted, BBBS,
12GA, Pre-Galv/HDG/
Aluminum/304SS/316SS



A20BBDS

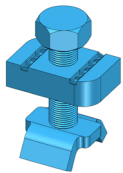
Solid/Slotted, BBDS,
12GA, Pre-Galv/HDG/
Aluminum/304SS/316SS



A20BBTU

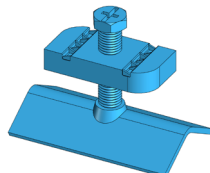
Solid/Slotted, BBTU,
12GA, Pre-Galv/HDG/
Aluminum/304SS/316SS

ROD STIFFENERS & COMBO NUT WASHER



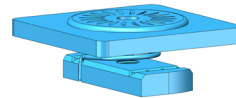
ASC228

Seismic Rod Stiffener,
Zinc/316SS



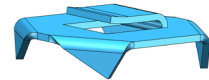
A901

Rod Stiffener Seismic, Zinc



ANW528

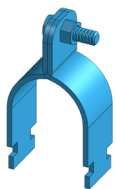
Combo Nut Washer, Zinc



P7600

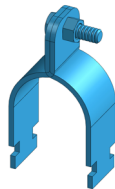
Seismic Cradle Clip, Zinc

STRUT CLAMPS & CUSHION CLAMP



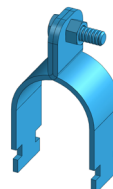
A910E

EMT Strut Clamp, Zinc/
HDG/Aluminum/316SS



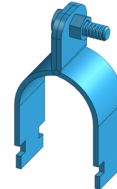
A910R

RIGID Strut Clamp,
Zinc/HDG/
Aluminum/304SS/316SS



A910OD

OD Strut Clamp, Zinc

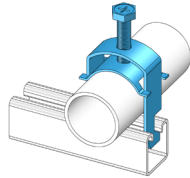


A910C

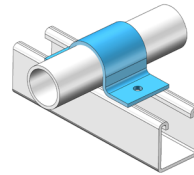
Strut Clamp, Copper Epoxy

**ASCH**

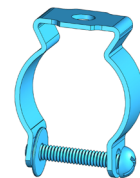
One Piece (Cobra) Clamp,
Zinc/316SS

**A081**

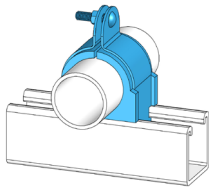
Cable Clamp, Zinc/
Aluminum/316SS

**A2558**

Pipe Strap for Strut,
HDG/316SS

**AFIGCD**

Conduit Clamp, Zinc

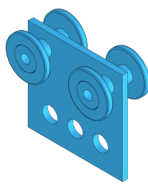
**A8500**

Cushion Clamp, Zinc/316SS

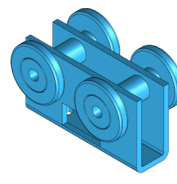
TROLLEYS & SUPPORT

**A2521**

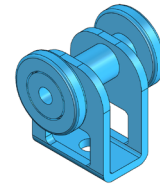
Two Wheel Plate Trolley,
Zinc

**A2522**

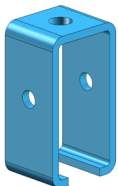
Four Wheel Plate Trolley,
Zinc

**A2524**

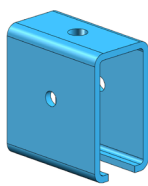
Four Wheel U Body Trolley,
Zinc

**A2525**

Two Wheel U Body Trolley,
Zinc

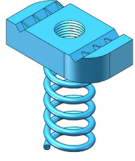
**A2528**

Trolley Support Splice, Zinc

**A2529**

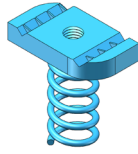
Trolley Support Splice Heavy
Duty, Zinc

SPRING NUTS



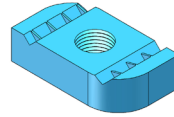
A900RG

Regular Spring, Zinc/HDG/
Aluminum/304SS/316SS



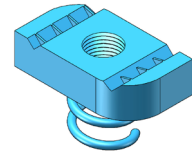
A900RG.M8

Metric Regular Spring,
Zinc/316SS



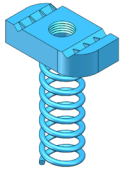
A900NS

No Spring, Zinc/HDG/
Aluminum/304SS/316SS



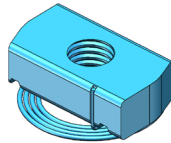
A900SH

Short Spring, Zinc



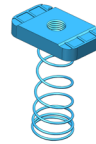
A900LS

Long Spring, Zinc



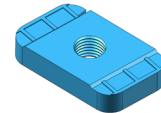
A900TS

Top Spring, Zinc



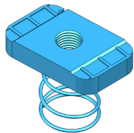
A6006RG

Mini Regular Spring, Zinc



A6006NS

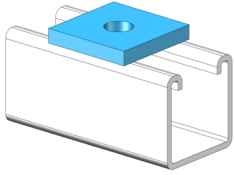
Mini No Spring, Zinc



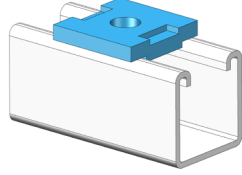
A6006SH

Mini Short Spring, Zinc

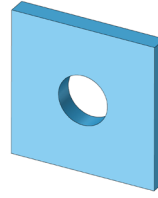
SQUARE WASHERS

**A621**

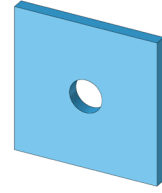
Square Washer, Zinc/
HDG/316SS

**A621NT**

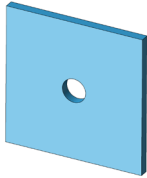
No Twist, HDG

**A2X2**

2" x 2", HDG

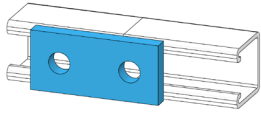
**A3X3**

3" x 3", HDG

**A4X4**

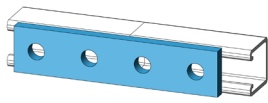
4" x 4", HDG

SPLICING CONNECTIONS



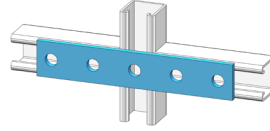
A601

Two Hole Splice Plate, Zinc/HDG/316SS



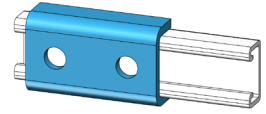
A723

Four Hole Splice Plate, Zinc/HDG/316SS



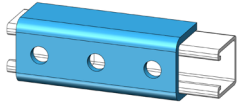
A724

Five Hole Splice Plate, HDG



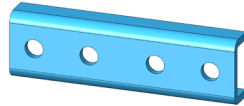
A409U

Two Hole Splice, Zinc/HDG



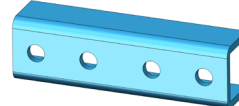
A412U

Three Hole Splice, HDG



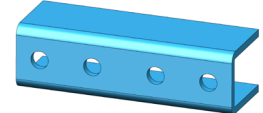
A616.1

1" Four Hole Splice, HDG



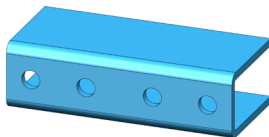
A616.1-5/8

1 5/8" Four Hole Splice, Zinc/HDG/316SS



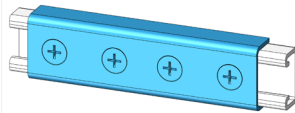
A616.2-7/16

2 7/16" Four Hole Splice, HDG



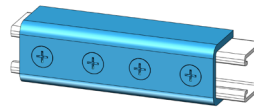
A616.3-1/4

3 1/4" Four Hole Splice, HDG



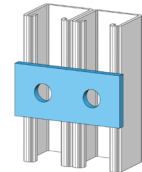
A649.13/16

13/16" U Shape Strut Splice, Zinc



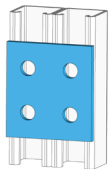
A649.1-5/8

1 5/8" U Shape Strut Splice, Zinc



A1924

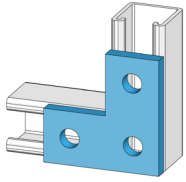
Two Hole Flat Plate (1 5/8"CC), HDG



A504

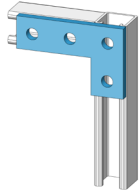
Four Hole Square Flat Plate, HDG

CORNER CONNECTIONS



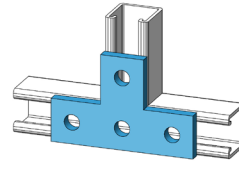
A718

Three Hole Flat Plate, Zinc/
HDG/316SS



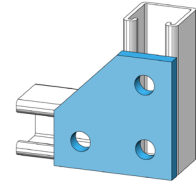
A123P

Four Hole Flat Plate, Zinc/
HDG/316SS



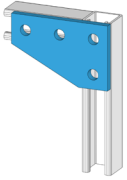
A714

Tee Plate, Zinc/HDG/316SS



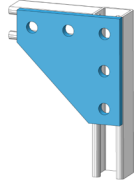
A744

Three Hole Plate, HDG



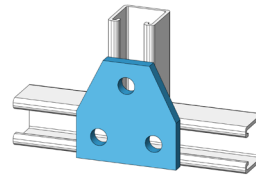
A750

Four Hole Corner Plate,
HDG/316SS



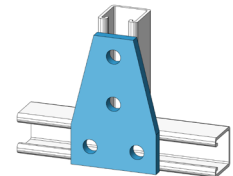
A751

Five Hole Corner Plate,
HDG/316SS



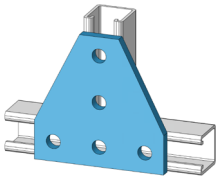
A925

Three Hole Tee Plate, HDG



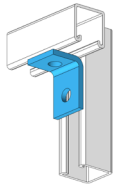
A747

Four Hole Tee Plate,
HDG/316SS



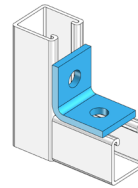
A854

Five Hole Tee Plate,
HDG/316SS



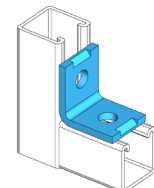
A604

Two Hole Angle, Zinc/
HDG/316SS



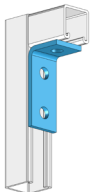
A603

Two Hole 90° Fitting, Zinc/
HDG/316SS



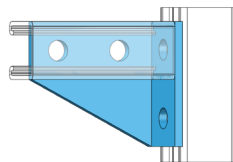
A207A

Two Hole 90° Fitting No
Twist, HDG



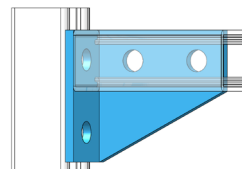
A210A

Three Hole 90° Fitting, Zinc/
HDG/316SS



A742

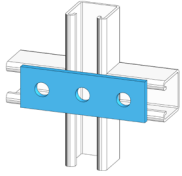
Four Hole Left Angle, HDG



A743

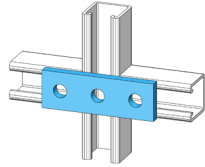
Four Hole Right Angle, HDG

CROSSING CONNECTIONS



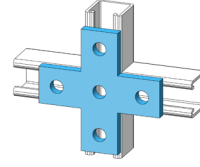
A113P

Three Hole Flat Plate
(1 5/8"CC), HDG



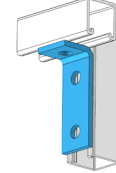
A602

Three Hole Splice Plate,
Zinc/HDG/316SS



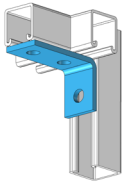
A712

Five Hole Cross Plate,
HDG/316SS



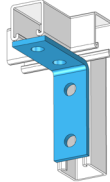
A606

Three Hole Angle Connector,
Zinc/HDG/316SS



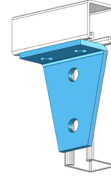
A605

Three Hole Angle, Zinc/
HDG/316SS



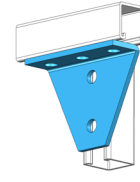
A607

Four Hole Angle, Zinc/
HDG/316SS



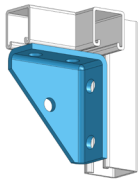
A748

Four Hole Angle Fitting,
HDG/316SS



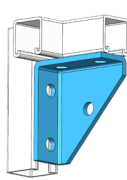
A230A

Five Hole Angle Fitting, HDG



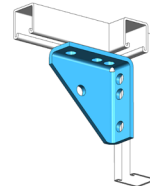
A216A

Five Hole Shelf Bracket Left,
HDG/316SS



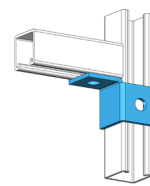
A215A

Five Hole Shelf Bracket
Right, HDG/316SS



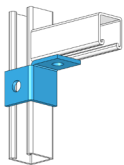
A608

Universal Shelf Bracket,
Zinc/HDG/316SS



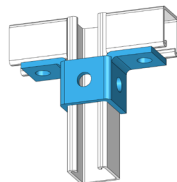
A922L

Two Hole Corner Bracket
Left, HDG



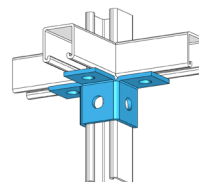
A922R

Two Hole Corner Bracket
Right, HDG



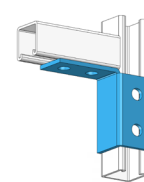
A923

Five Hole Wing Fitting,
HDG/316SS



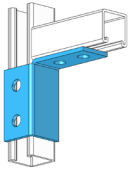
A668

Six Hole Wing Fitting, HDG



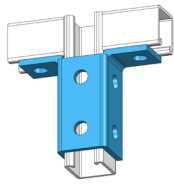
A2128L

Four Hole Corner Bracket
Left, HDG



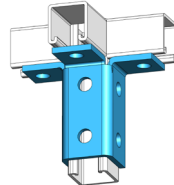
A2128R

Four Hole Corner Bracket
Right, HDG



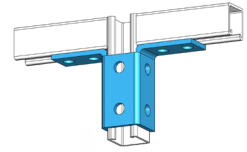
A821

Eight Hole Wing Fitting,
Zinc/HDG/316SS



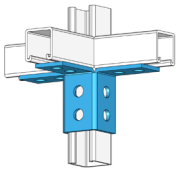
A670

Nine Hole Wing Fitting, HDG



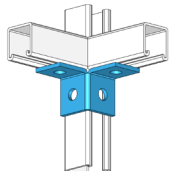
A913

Ten Hole Wing Fitting, HDG



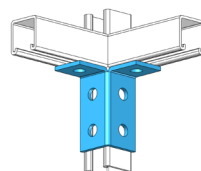
A669

Twelve Hole Wing Fitting,
HDG



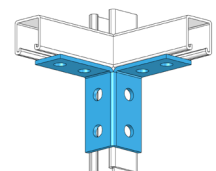
A665

Four Hole Corner Fitting,
HDG



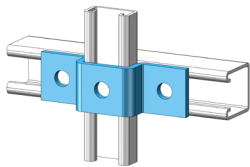
A666

Six Hole Corner Fitting, HDG



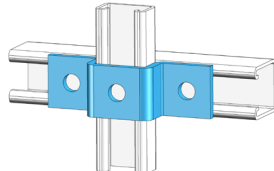
A667

Eight Hole Corner Fitting,
HDG



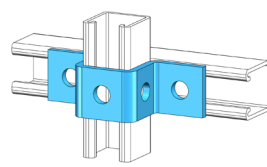
A929

13/16" U Shape Bracket,
HDG



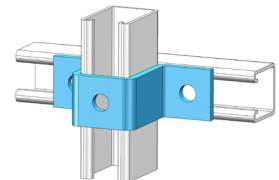
A614

1" U Shape Bracket, HDG



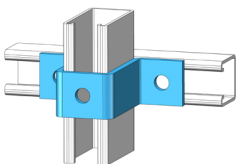
A613

1 5/8" U Shape Bracket Five
Holes, Zinc/HDG/316SS



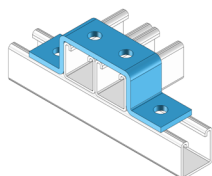
A2648

2 7/16" U Shape Bracket,
HDG



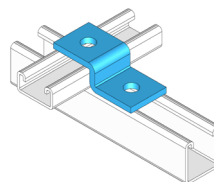
A2649

3 1/4" U Shape Bracket,
HDG



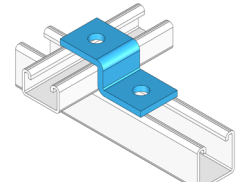
A2650

3 1/4" U Shape Bracket
Horizontal, HDG



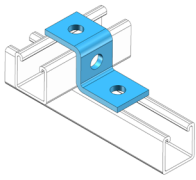
A928

13/16" Z Shape Angle, Zinc/
HDG



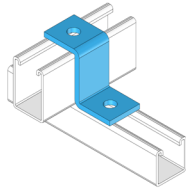
A612

1" Z Shape Angle, Zinc/HDG



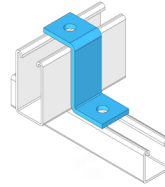
A611

1 5/8" Z Shape Angle Three Holes, Zinc/HDG/316SS



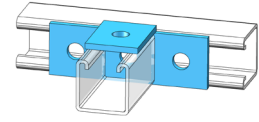
A2601

2 7/16" Z Shape Angle, Zinc/HDG



A2602

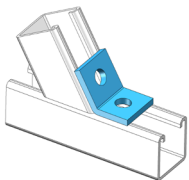
3 1/4" Z Shape Angle, Zinc/HDG



A715

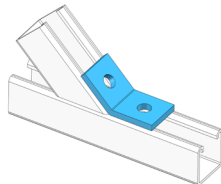
Offset Bent Tee Plate, HDG/316SS

ANGLE CONNECTIONS



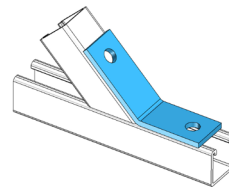
AA2126

1 1/4" x 1 7/16" Two Hole Outside Open Angle 45°, HDG



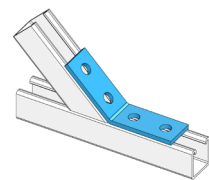
A632

1 5/8" x 1 3/4" Two Hole Open Short Angle 30°/45°/60°, HDG



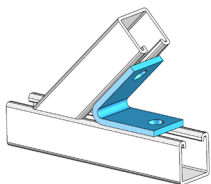
A633

Two Hole Open Angle 30°/45°/60°, Zinc/HDG/316SS



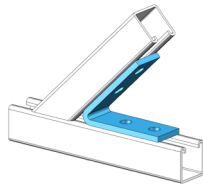
A781

Four Hole Open Angle 30°/45°/60°, Zinc/HDG/316SS



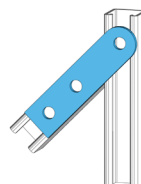
A624

Two Hole Closed Angle 30°/45°/60°, HDG/316SS



A793

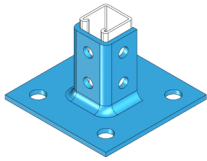
Four Hole Closed Angle 30°/45°/60°, Zinc/HDG/316SS



A117P

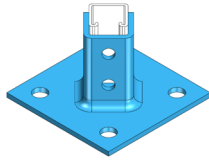
Three Hole Adjustable Plate, HDG

POST BASES



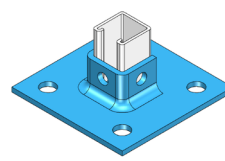
A3033

Single Post Base, Zinc/
HDG/316SS



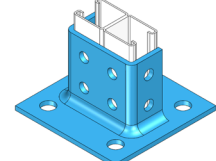
A3033O

Offset Single Post Base,
Zinc/HDG/316SS



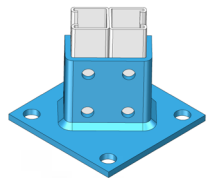
A503PB

Single Post Base Short,
HDG/316SS



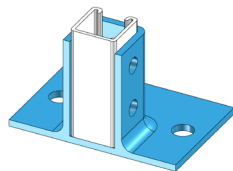
A3064

Double Post Base, Zinc/
HDG/316SS



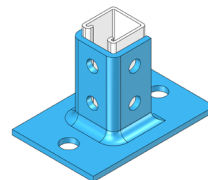
A3064O

Offset Double Post Base,
HDG



A508PB

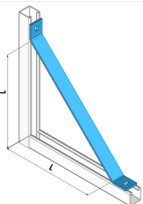
Single Post Base Open,
Zinc/HDG/316SS



A509PB

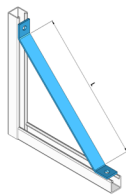
Single Post Base Narrow,
Zinc/HDG/316SS

BRACES & HINGES



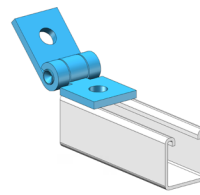
A926

Knee Brace, HDG/316SS



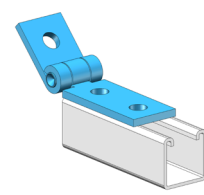
A926LPI

Knee Brace (LPI), HDG



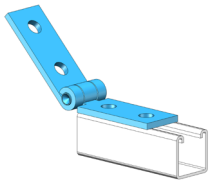
A1843

Two Hole Adjustable Hinge
Fitting, Zinc/HDG



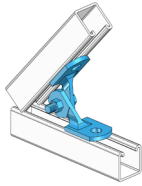
A1354A

Three Hole Adjustable Hinge
Fitting, Zinc/HDG



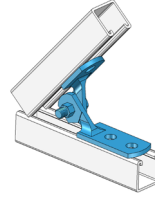
A1354

Four Hole Adjustable Hinge Fitting, Zinc/HDG



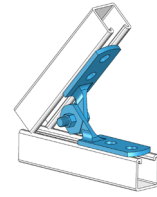
AR292A

Two Hole Adjustable Hinge, Zinc/HDG/316SS



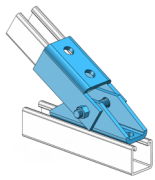
AR293A

Three Hole Adjustable Hinge, Zinc/HDG/316SS



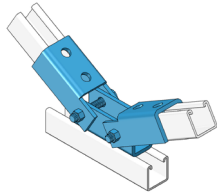
AR294A

Four Hole Adjustable Hinge, Zinc/HDG/316SS



AR298A

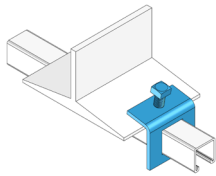
Adjustable Single Channel Brace, HDG



AR299A

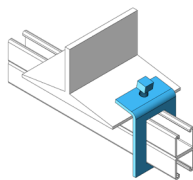
Adjustable Double Channel Brace, HDG

BEAM CLAMPS



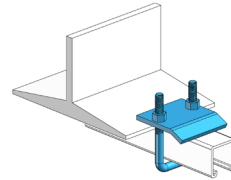
A855

Window Beam Clamp, Zinc/HDG/316SS



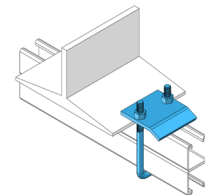
A855D

Window Beam Clamp Deep, HDG/316SS



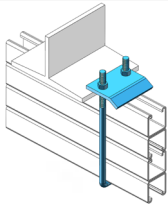
A2652

U Bolt Beam Clamp, Zinc/HDG/ALL HDG/316SS



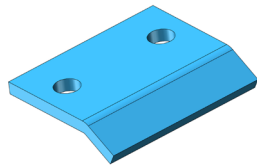
A2651

U Bolt Beam Clamp Deep, Zinc/HDG/ALL HDG/316SS



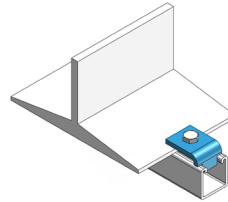
A2653

U Bolt Beam Clamp Double Deep, HDG



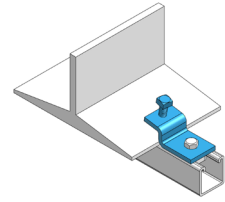
A2651.PLATE

Plate Only, HDG



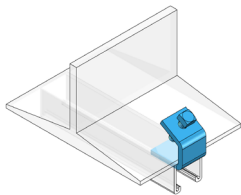
A686

Flange Strut Beam Clamp, Zinc/HDG/316SS



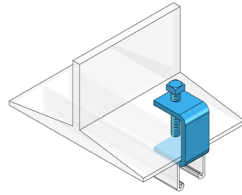
A685

Z Shape Beam Clamp, Zinc/HDG/316SS



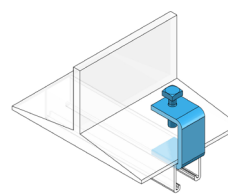
A907A

Strut Beam Clamp 1" Opening, HDG/316SS



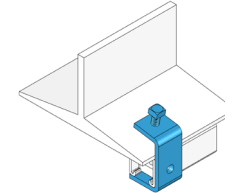
A907B

Strut Beam Clamp 1 1/2" Opening, HDG/316SS



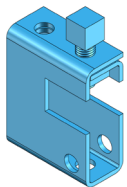
A907C

Strut Beam Clamp 2 1/8" Opening, HDG/316SS



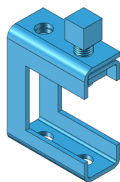
A684

Strut Beam Clamp 2 1/2" Opening, HDG/316SS



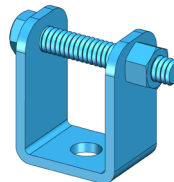
A2622HD.7/8

Strut Beam Clamp 7/8" Opening, HDG/316SS



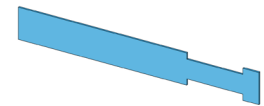
A2622HD.1-21/32

Strut Beam Clamp 1 21/32" Opening, HDG



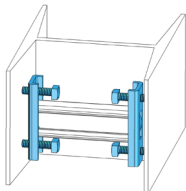
A2623

Strut Clevis Hanger, HDG



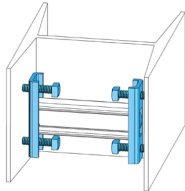
A2622

Safety Strap, Pre-Galv



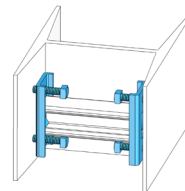
A954BC.13/16

13/16" Column Insert, Zinc



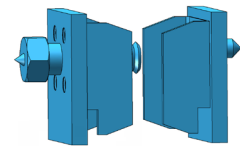
A954BC.1

1" Column Insert, Zinc



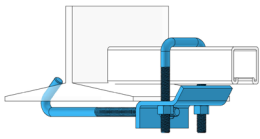
A954BC

1 5/8" Column Insert, Zinc/HDG/316SS



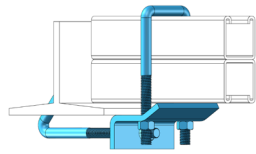
ABC23

Column Insert Square, Zinc



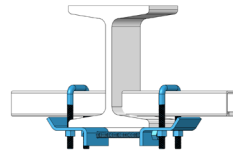
A948SBC

J Hook Beam Clamp, Zinc



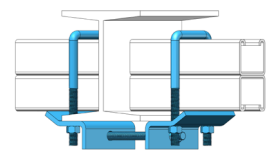
A948LBC

J Hook Beam Clamp Deep,
Zinc



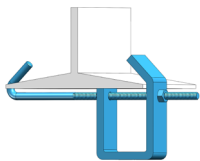
A949SBC

J Hook Beam Clamp Double,
Zinc



A949LBC

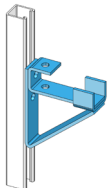
J Hook Beam Clamp Double
Deep, Zinc



A997BC

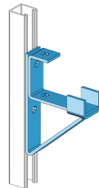
J Hook Beam Clamp Heavy
Duty, HDG

BRACKETS



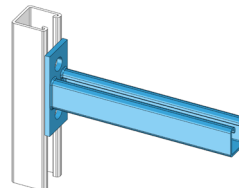
A708

Channel Support Bracket,
HDG/316SS



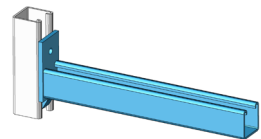
A709

Channel Support Bracket
Double, HDG



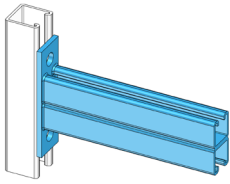
A651

Single Channel Support
Bracket, HDG/316SS



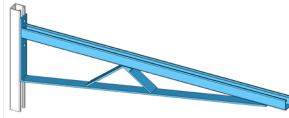
A600B

Single Interlocking Bracket,
HDG



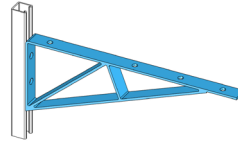
A809

Double Channel Support
Bracket, HDG/316SS



A3282

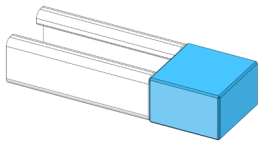
Cantilever Wall Bracket,
HDG/316SS



A690B

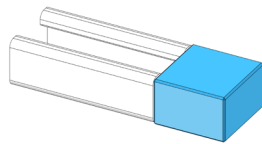
Shelf Bracket, HDG

ELECTRICAL & RACEWAY FITTINGS



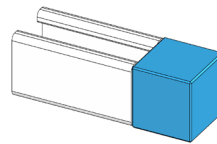
A655P.13/16

13/16" Channel End Cap,
Plastic



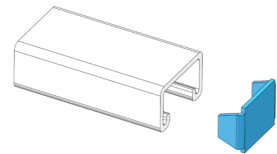
A655P.1

1" Channel End Cap, Plastic



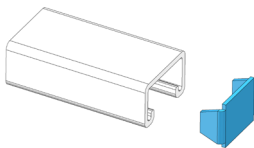
A655P.1-5/8

1 5/8" Channel End Cap,
Plastic



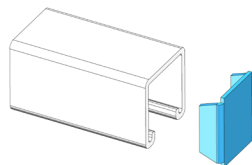
A655.13/16

13/16" Channel End Cap,
Zinc/316SS



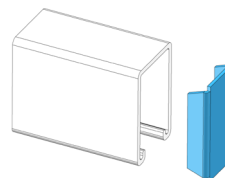
A655.1

1" Channel End Cap,
Zinc/316SS



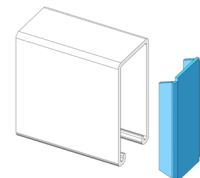
A655.1-5/8

1 5/8" Channel End Cap,
Zinc/316SS



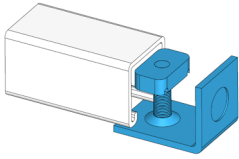
A655.2-7/16

2 7/16" Channel End Cap,
Zinc



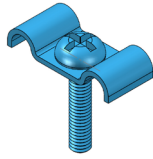
A655.3-1/4

3 1/4" Channel End Cap,
Zinc



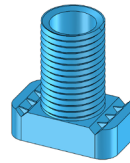
A2511

End Cap with Knockout, Zinc



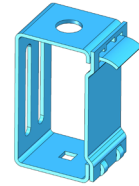
A2636

Fixture Stud Nut, Zinc



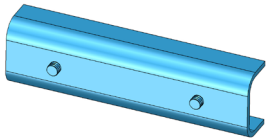
A2625

Wiring Stud Nut, Aluminum



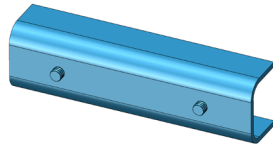
A2632

Strut Channel Hanger, Zinc



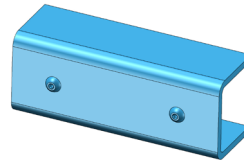
A641

13/16" Internal Splice, Zinc



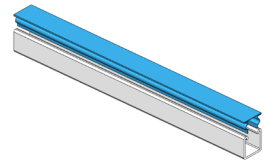
A642

1" Internal Splice, Zinc



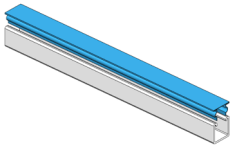
A643

1 5/8" Internal Splice, Zinc



A707PL

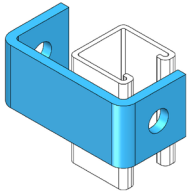
Closure Strip, Plastic



C707

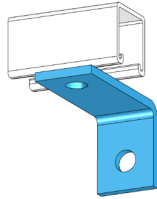
Closure Strip, Zinc

OFFSET CONNECTIONS & OTHERS



A402U

Clevis Connector, HDG



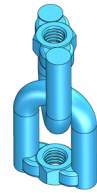
A208

Offset Connector, HDG



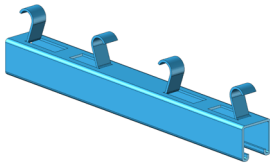
AFIGSWMF

SWMF Swivel Male To Female, Zinc



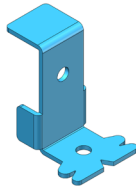
AFIGSWFF

SWFF Swivel Female To Female, Zinc



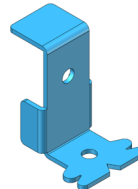
C270P

1 5/8", Concrete Insert,
12GA, Pre-Galv



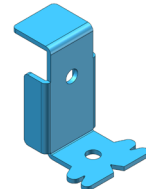
A52.13/16

13/16" Anchor Cap, Zinc



A52.1

1" Anchor Cap, Zinc



A52.1-5/8

1 5/8" Anchor Cap, Zinc

PIPE HANGERS & SUPPORTS

BEAM CLAMPS

CLEVIS HANGERS

SWIVEL RING/LOOP HANGERS

RISER & PIPE CLAMPS

CPVC CLAMPS

THREADED ACCESSORIES

ATTACHMENTS

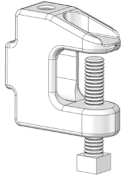
PIPE STAYS & STRAPS

PIPE ROLLER & SUPPORTS

SEISMIC PROTECTION

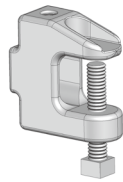
OTHER PRODUCTS

BEAM CLAMPS



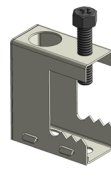
AFIGBC26

1/4" Beam Clamp, Zinc



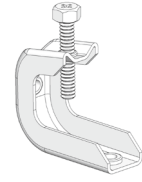
AFIGBC26H

1/4" Beam Clamp, HDG



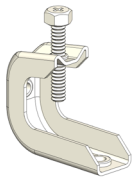
AFIGBC

BC Beam Clamp, Powder Coated



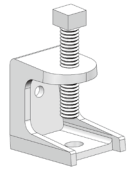
AFIGBC200

Steel Beam Clamp, Zinc



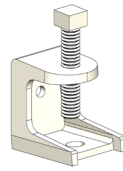
AFIGBC200SS6

Steel Beam Clamp, 316SS



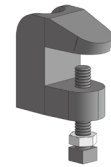
AFIG405Z

Insulator Beam Clamp, Zinc



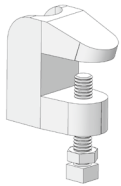
AFIG405SS6

Insulator Beam Clamp, 316SS



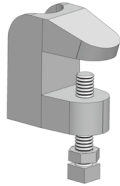
AFIG406

Small Mouth Beam Clamp, Plain



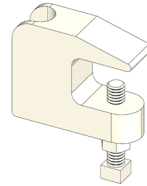
AFIG406Z

Small Mouth Beam Clamp, Zinc



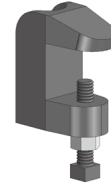
AFIG406H

Small Mouth Beam Clamp, HDG



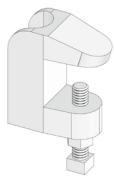
AFIG406SS6

Small Mouth Beam Clamp, 316SS



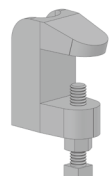
AFIG407

Wide Mouth Beam Clamp, Plain



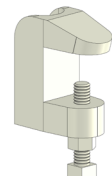
AFIG407Z

Wide Mouth Beam Clamp, Zinc



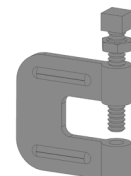
AFIG407H

Wide Mouth Beam Clamp, HDG



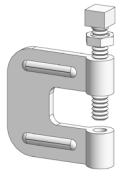
AFIG407SS6

Wide Mouth Beam Clamp, 316SS



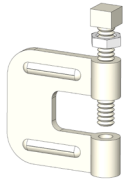
AFIG201

Stamped C Clamp, Plain



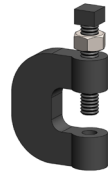
AFIG201Z

Stamped C Clamp, Zinc



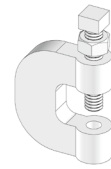
AFIG201SS6

Stamped C Clamp, 316SS



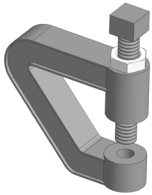
AFIG301

Malleable C Clamp, Plain



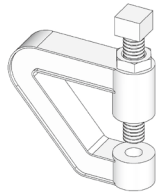
AFIG301Z

Malleable C Clamp, Zinc



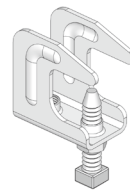
AFIG404

Purlin Clamp, Plain



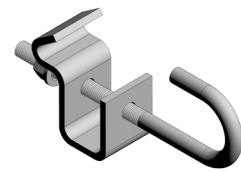
AFIG404Z

Purlin Clamp, Zinc



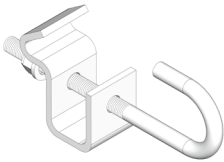
AFIGSBC

Stamped Beam Clamp Top Mount, Zinc



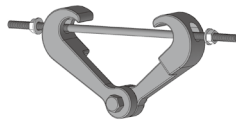
AFIG159

Adjustable Rod Beam Clamp, Plain



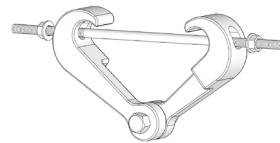
AFIG159Z

Adjustable Rod Beam Clamp, Zinc



AFIG410

Center Beam Clamp, Plain



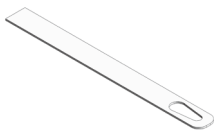
AFIG410Z

Center Beam Clamp, Zinc



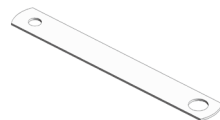
AFIGRA

Right Angle Clamp, HDG



AFIG416

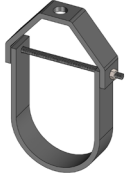
Retaining Strap, Zinc



PFIG35RS

Two Hole Retaining Strap, Zinc

CLEVIS HANGERS



AFIG24

Standard Clevis Hanger,
Plain



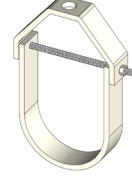
AFIG24Z

Standard Clevis Hanger,
Zinc



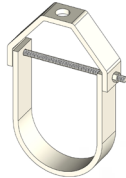
AFIG24H

Standard Clevis Hanger,
HDG



PFIG24SS4

Standard Clevis Hanger,
304SS



PFIG24SS6

Standard Clevis Hanger,
316SS



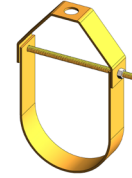
AFIG22Z

Light Duty Clevis Hanger,
Zinc



AFIG52

Clevis Hanger, Copper
Epoxy



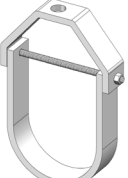
AFIG52CP

Clevis Hanger, Copper
Plated



AFIG27AC

AWWA Ductile Clevis
Hanger, Plain



AFIG27ACZ

AWWA Ductile Clevis
Hanger, Zinc



AFIG25

MJ Hanger, Plain



AFIG25Z

MJ Hanger, Zinc

SWIVEL RING/LOOP HANGERS



AFIG41

Swivel Ring Hanger, Pre-Galv



AFIG41SS4

Swivel Ring Hanger, 304SS



AFIG41SS6

Swivel Ring Hanger, 316SS



AFIG42

Swivel Ring Hanger, Copper Epoxy



AFIG42CP

Swivel Ring Hanger, Copper Plated



AFIG43

Swivel Ring Hanger, Black Epoxy



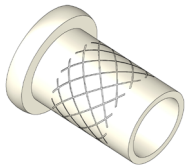
AFIG418

J Hanger, Zinc



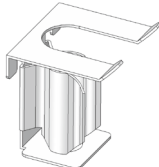
AFIG41A

Swivel Nut, Zinc



AFIG41ASS6

Swivel Nut, 316SS



PFIG055

Surge Restraint, Powder Coated

RISER & PIPE CLAMPS



AFIG82

Riser Clamp, Plain



AFIG82Z

Riser Clamp, Zinc



AFIG82H

Riser Clamp, HDG



PFIG82SS4

Riser Clamp, 304SS



PFIG82SS6

Riser Clamp, 316SS



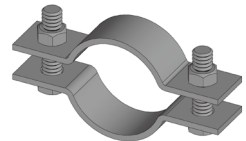
AFIG85

Riser Clamp, Copper Epoxy



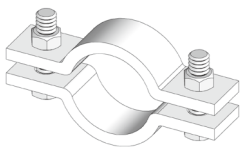
AFIG85CP

Riser Clamp, Copper Plated



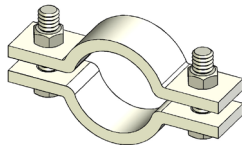
AFIG31

Two Bolt Pipe Clamp, Plain



AFIG31Z

Two Bolt Pipe Clamp, Zinc



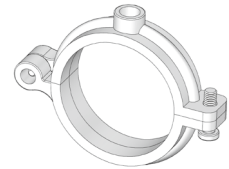
PFIG31SS6

Two Bolt Pipe Clamp, 316SS



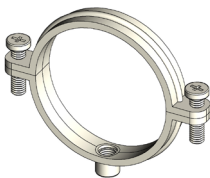
AFIG38

Split Ring Hanger, Plain



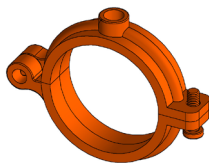
AFIG38Z

Split Ring Hanger, Zinc



AFIG38SS6

Split Ring Hanger, 316SS



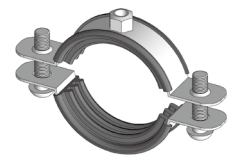
AFIG38C

Split Ring Hanger, Copper Epoxy



AFIG38CP

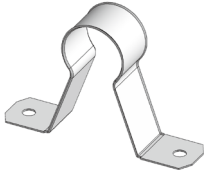
Split Ring Hanger, Copper Plated



AFIG4300

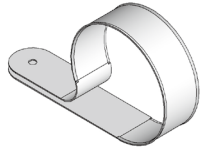
Two Bolt Rubber Lined Clamp, Zinc

CPVC CLAMPS



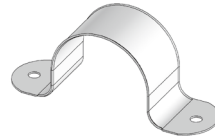
PFIGSOSR

Stand Off Two Hole Strap,
Zinc



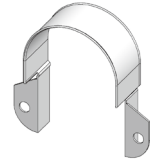
PFIG107

Wraparound Strap For
CPVC, Zinc



PFIG108

Two Hole Strap For CPVC,
Zinc



PFIG109

Side Mount Strap For CPVC,
Zinc

THREADED ACCESSORIES



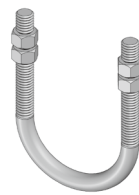
AFIG14

Standard U Bolt, Plain



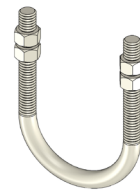
AFIG14Z

Standard U Bolt, Zinc



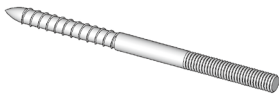
AFIG14H

Standard U Bolt, HDG



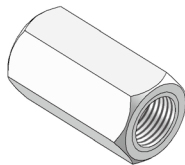
AFIG14SS6

Standard U Bolt, 316SS



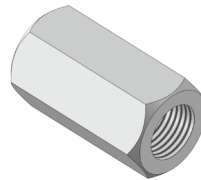
AFIG60WZ

Coach Screw Rod, Zinc



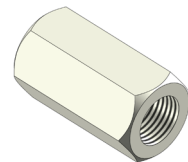
AFIG62

Rod Coupling, Zinc



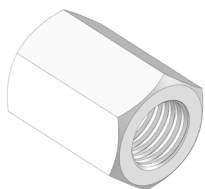
AFIG62H

Rod Coupling, HDG



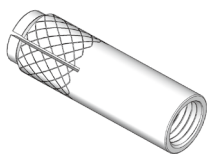
AFIG62SS6

Rod Coupling, 316SS



PFIG105

Reducing Rod Coupling,
Zinc



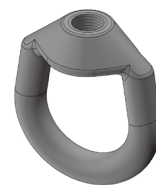
PFIG47S

Drop In Concrete Anchor,
Zinc



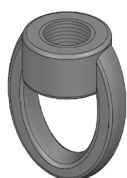
AFIG63

Forged Steel Clevis, Plain



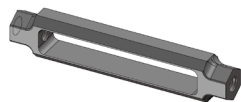
AFIG64

Weldless Eye Nut, Plain



AFIG65

Eye Socket (casting), Plain



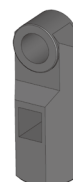
AFIG68

Turnbuckle, Plain



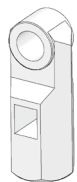
AFIG114

Turnbuckle Adjuster, Plain



AFIG411

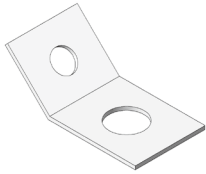
Extension Piece, Plain



AFIG411Z

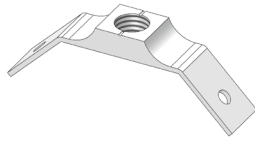
Extension Piece, Zinc

ATTACHMENTS



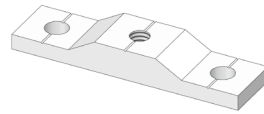
AFIG115

45° Bracing Attachment, Zinc



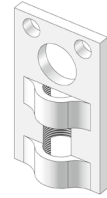
AFIGQD

Q Deck Hanger, Aluminum



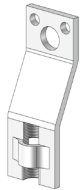
AFIGCF

Ceiling Flange, Aluminum



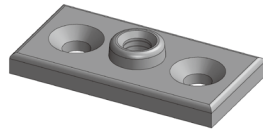
AFIG37

Steel Eye Socket, Zinc



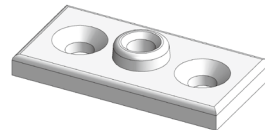
AFIG37O

Offset Steel Eye Socket, Zinc



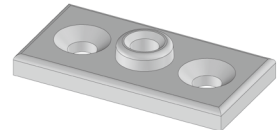
AFIG28

Ceiling Flange, Plain



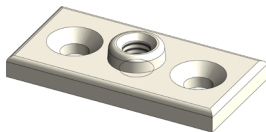
AFIG28Z

Ceiling Flange, Zinc



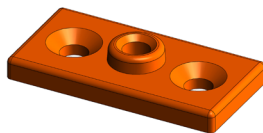
AFIG28H

Ceiling Flange, HDG



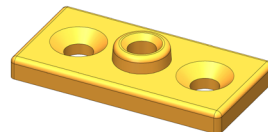
AFIG28SS6

Ceiling Flange, 316SS



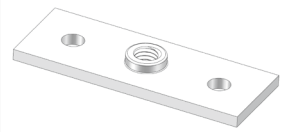
AFIG28C

Ceiling Flange, Copper Epoxy



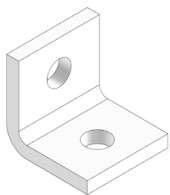
AFIG28CP

Ceiling Flange, Copper Plated



PFIG945

Steel Ceiling Plate, Zinc



AFIGA350

Side Beam Bracket, Zinc



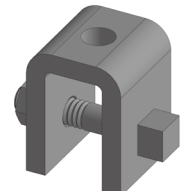
AFIG327

Side Beam Attachment, Plain



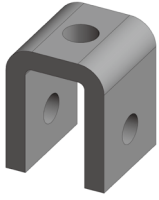
AFIG327Z

Side Beam Attachment, Zinc



AFIG66

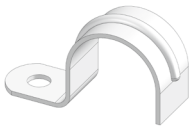
Welded Beam Attachment w/ Bolt & Nut, Plain



AFIG67

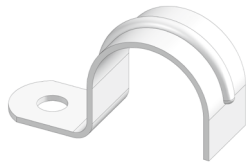
Welded Beam Attachment
w/o Bolt & Nut, Plain

PIPE STAYS & STRAPS



AFIG44E

EMT One Hole Pipe Strap,
Zinc



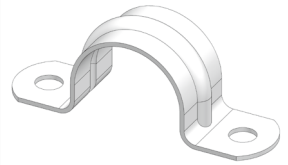
AFIG44

RIGID One Hole Pipe Strap,
Zinc



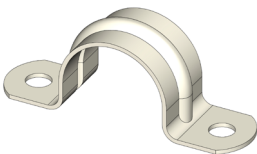
AFIG45E

EMT Two Hole Pipe Strap,
Zinc



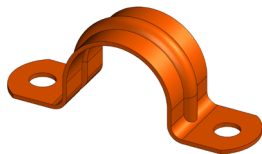
AFIG45

RIGID Two Hole Pipe Strap,
Zinc



AFIG45SS6

Two Hole Pipe Strap, 316SS



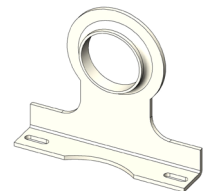
AFIG45C

Two Hole Pipe Strap,
Copper Epoxy



AFIG32S

Standard Pipe Stay, Black
Epoxy



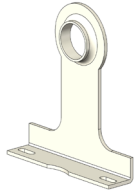
AFIG32SSS6

Standard Pipe Stay, 316SS



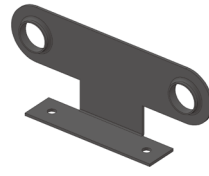
AFIG32E

Extended Pipe Stay, Black Epoxy



AFIG32ESS6

Extended Pipe Stay, 316SS



AFIG32D

Double Pipe Stay, Black Epoxy



AFIG129

Bell Hanger, Copper Epoxy



AFIG1276

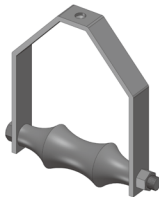
One Hole Malleable Clamp, Zinc

PIPE ROLLER & SUPPORTS



AFIG92

Long Pipe Roll, Plain



AFIG93

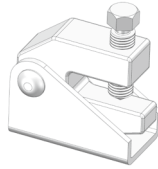
Clevis Roller Hanger, Plain

SEISMIC PROTECTION



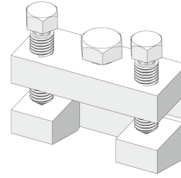
PFIG020

Rod Swivel Attachment, Zinc



PFIGSB030

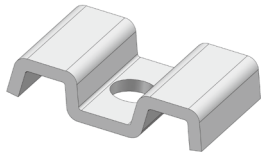
C Clamp Structural Attachment, Zinc



PFIGSB035

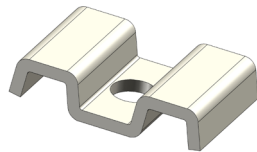
Sway Brace Bar Joist Adapter, Zinc

OTHER PRODUCTS



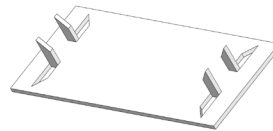
AFIGGCS037H

Grating Clip Saddle, HDG



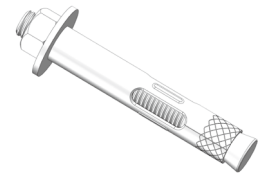
AFIGGCS037SS6

Grating Clip Saddle, 316SS



AFIG501Z

Stud Plate, Zinc



ASA.1/2X3

Concrete Sleeve Anchor, Zinc



Aiming to Build a Better Future

Tel: 1-855-701-5995 / 416-431-6565

Fax: 1-855-701-5994 / 416-438-8980

Email: info@aimcointl.com

60 North Wind Place, Toronto, Ontario, Canada, M1S 5L4

www.aimcointl.com