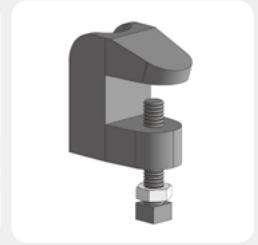
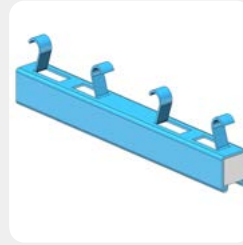
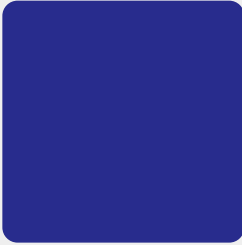
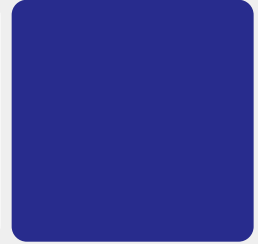
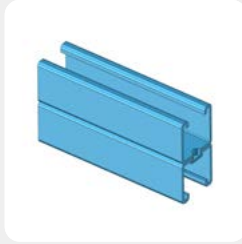
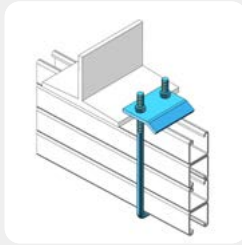
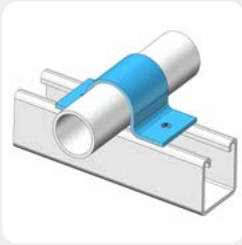


AIMCO*

INTERNATIONAL GROUP

Aiming to Build a Better Future

Proud Domestic Manufacturing Partners:



AIMCO

INTERNATIONAL GROUP

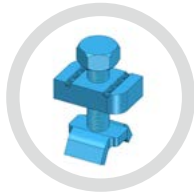
AIMING TO BUILD A BETTER FUTURE

Contents

© STRUT CHANNELS & FITTINGS



Strut Channels



Rod Stiffeners &
Combo Nut Washer



Strut Clamps &
Cushion Clamp



Trolleys &
Support



Spring Nuts



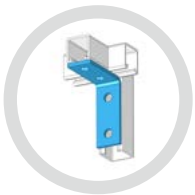
Square
Washers



Splicing
Connections



Conner
Connections



Crossing
Connections



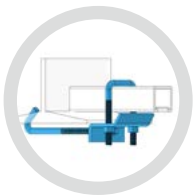
Angle
Connections



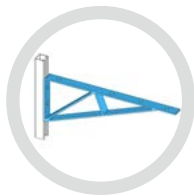
Post Bases



Braces &
Hinges



Beam Clamps



Brackets

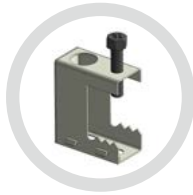


Electrical &
Raceway Fittings



Offset Connections
& Others

© PIPE HANGERS & SUPPORTS



Beam Clamps



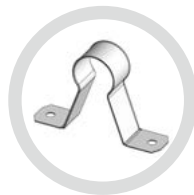
Clevis Hangers



Swivel Ring/Loop Hangers



Riser & Pipe Clamps



CPVC Clamps



Threaded Accessories



Attachments



Pipe Stays & Straps



Pipe Roller & Supports



Seismic Protection



Other Products

STRUT CHANNELS & FITTINGS

STRUT CHANNELS

ROD STIFFENERS & COMBO NUT WASHER

STRUT CLAMPS & CUSHION CLAMP

TROLLEYS & SUPPORT

SPRING NUTS

SQUARE WASHERS

SPLICING CONNECTIONS

CORNER CONNECTIONS

CROSSING CONNECTIONS

ANGLE CONNECTIONS

POST BASES

BRACES & HINGES

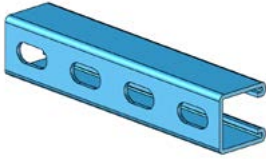
BEAM CLAMPS

BRACKETS

ELECTRICAL & RACEWAY FITTINGS

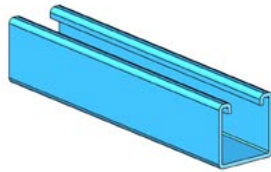
OFFSET CONNECTIONS & OTHERS

STRUT CHANNELS



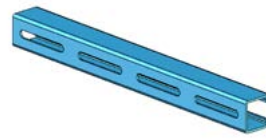
A20SL

1 5/8", Slotted, 12GA,
Pre-Galv/HDG/
Aluminum/304SS/316SS/
Epoxy/Fiberglass



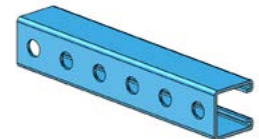
A20

1 5/8", Solid, 12GA,
Pre-Galv/HDG/
Aluminum/304SS/316SS/
Fiberglass



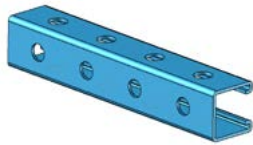
A20ES

1 5/8", Elongated Slot,
12GA, Pre-Galv



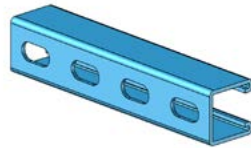
A20HS

1 5/8", Holes, 12GA, Pre-
Galv



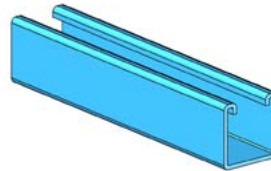
P20HS3

1 5/8", Holes Three Sides,
12GA, Pre-Galv



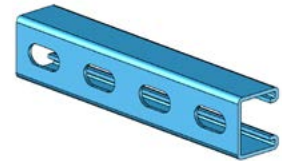
A40SL

1 5/8", Slotted, 14GA, Pre-
Galv



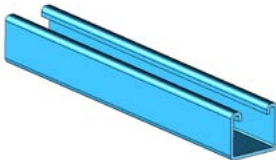
A40

1 5/8", Solid, 14GA, Pre-
Galv



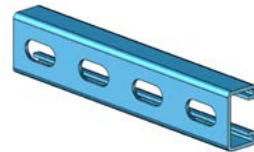
A30SL

1 3/8", Slotted, 12GA, Pre-
Galv



A30

1 3/8", Solid, 12GA, Pre-
Galv



A50SL

1", Slotted, 12GA,
Pre-Galv/HDG/
Aluminum/304SS/316SS



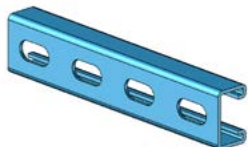
A50

1", Solid, 12GA,
Pre-Galv/HDG/
Aluminum/304SS/316SS



A50ES

1", Elongated Slot, 12GA,
Pre-Galv



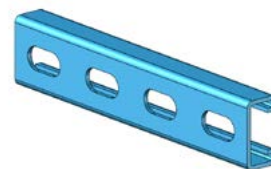
A55SL

1", Slotted, 14GA, Pre-Galv



A55

1", Solid, 14GA, Pre-Galv



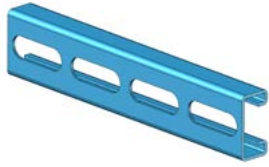
A45SL

7/8", Slotted, 12GA, Pre-
Galv



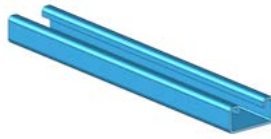
A45

7/8", Solid, 12GA, Pre-Galv



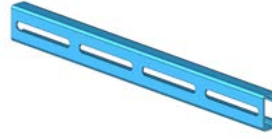
A70SL

13/16", Slotted,
14GA, Pre-Galv/HDG/
Aluminum/304SS/316SS



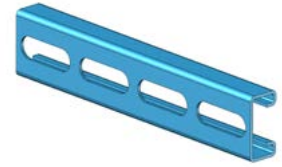
A70

13/16", Solid, 14GA,
Pre-Galv/HDG/
Aluminum/304SS/316SS



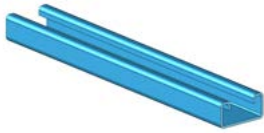
A70ES

13/16", Elongated Slot,
14GA, Pre-Galv



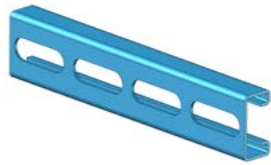
A75SL

13/16", Slotted, 16GA, Pre-
Galv



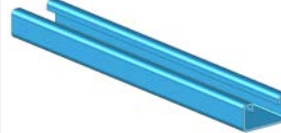
A75

13/16", Solid, 16GA, Pre-
Galv



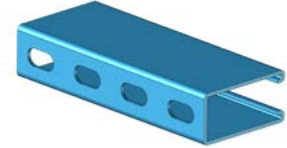
A74SL

13/16", Slotted, 12GA, Pre-
Galv



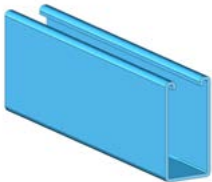
A74

13/16", Solid, 12GA, Pre-
Galv



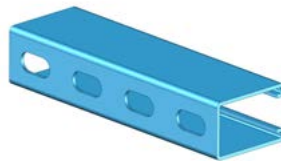
A90SL

3 1/4", Slotted, 12GA, Pre-
Galv/316SS



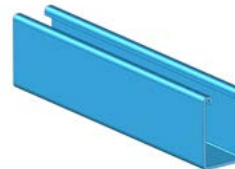
A90

3 1/4", Solid, 12GA, Pre-
Galv/316SS



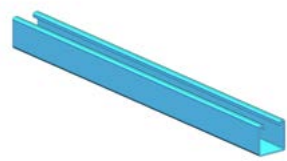
A10SL

2 7/16", Slotted, 12GA, Pre-
Galv/316SS



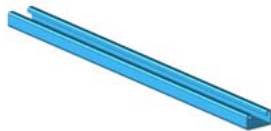
A10

2 7/16", Solid, 12GA, Pre-
Galv/316SS



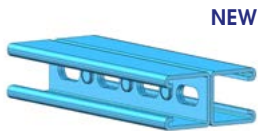
A18

13/16" x 13/16", Mini Solid,
19GA, Pre-Galv



A19

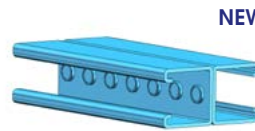
13/32" x 13/16", Mini Solid,
19GA, Pre-Galv



NEW

C20SLBBPJ

3 1/4", Slotted, Press Joined/
Clinched Back-to-Back,
12GA, Pre-Galv



NEW

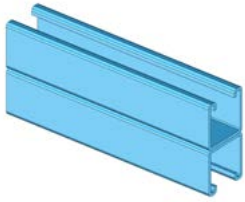
C20BBPJ

3 1/4", Solid, Press Joined/
Clinched Back-to-Back,
12GA, Pre-Galv



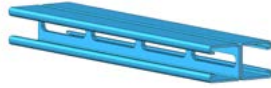
A20SLBB

3 1/4", Slotted, Back-to-
Back, 12GA, Pre-Galv/HDG/
Aluminum/304SS/316SS



A20BB

3 1/4", Solid, Back-to-Back,
12GA, Pre-Galv/HDG/
Aluminum/304SS/316SS



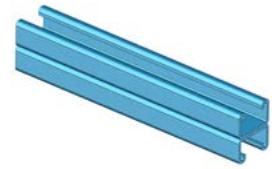
A20ESBB

3 1/4", Elongated
Slot, Back-to-Back,
12GA, Pre-Galv/HDG/
Aluminum/304SS/316SS



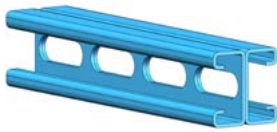
A50SLBB

2", Slotted, Back-to-Back,
12GA, Pre-Galv/HDG/
Aluminum/304SS/316SS



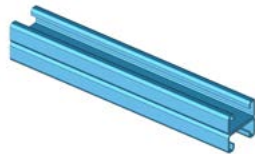
A50BB

2", Solid, Back-to-Back,
12GA, Pre-Galv/HDG/
Aluminum/304SS/316SS



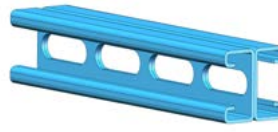
A70SLBB

1 5/8", Slotted, Back-to-
Back, 14GA, Pre-Galv/HDG/
Aluminum/304SS/316SS



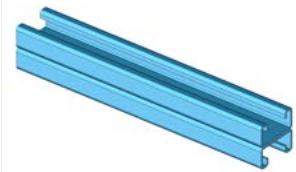
A70BB

1 5/8", Solid, Back-to-Back,
14GA, Pre-Galv/HDG/
Aluminum/304SS/316SS



A74SLBB

1 5/8", Slotted, Back-to-
Back, 12GA, Pre-Galv



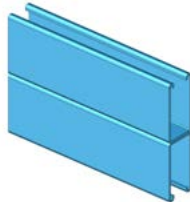
A74BB

1 5/8", Solid, Back-to-Back,
12GA, Pre-Galv



A90SLBB

6 1/2", Slotted, Back-to-
Back, 12GA, Pre-
Galv/316SS



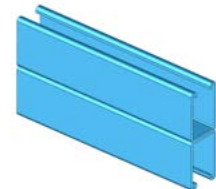
A90BB

6 1/2", Solid, Back-to-Back,
12GA, Pre-Galv/316SS



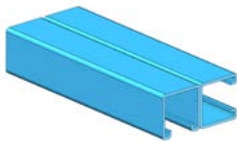
A10SLBB

4 7/8", Slotted, Back-to-
Back, 12GA, Pre-
Galv/316SS



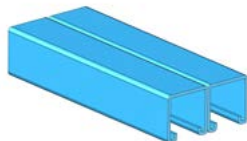
A10BB

4 7/8", Solid, Back-to-Back,
12GA, Pre-Galv/316SS



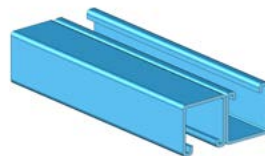
A20BTS

Solid/Slotted, Back-to-
Side, 12GA, Pre-Galv/HDG/
Aluminum/304SS/316SS



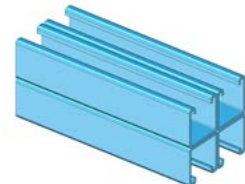
A20STS

Solid/Slotted, Side-to-Side,
12GA, Pre-Galv/HDG/
Aluminum/304SS/316SS



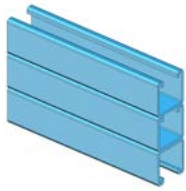
A20OUD

Solid/Slotted, One-
Up-One-Down, 12GA,
Pre-Galv/HDG/
Aluminum/304SS/316SS



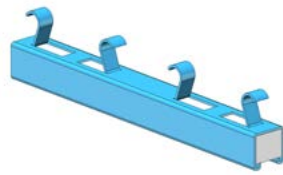
A20BBDS

Solid/Slotted, BBDS,
12GA, Pre-Galv/HDG/
Aluminum/304SS/316SS



A20BBTU

Solid/Slotted, BBTU,
12GA, Pre-Galv/HDG/
Aluminum/304SS/316SS



C270P

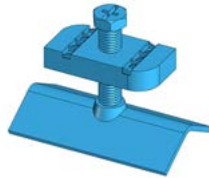
1 5/8", Concrete Insert,
12GA, Pre-Galv

ROD STIFFENERS & COMBO NUT WASHER



ASC228

Seismic Rod Stiffener,
Zinc/316SS



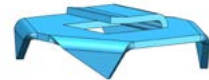
A901

Rod Stiffener, Zinc



ANW528

Combo Nut Washer, Zinc,
1/4" - 1/2"



P7600

Seismic Cradle Clip, Zinc

STRUT CLAMPS & CUSHION CLAMP



A910E

EMT Strut Clamp, Zinc/
HDG/Aluminum/316SS,
1/2" - 2"



A910R

RIGID Strut Clamp,
Zinc/HDG/Aluminum/
304SS/316SS, 3/8" - 12"



A910OD

OD Strut Clamp, Zinc,
1/4" - 10"



A910C

Strut Clamp, Copper Epoxy,
1/4" - 6"



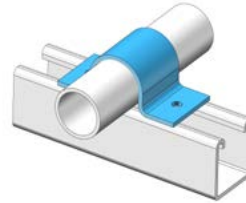
ASCH

One Piece (Cobra) Clamp,
Zinc/316SS, 3/8" - 4"



A081

Cable Clamp, Zinc/
Aluminum/316SS, 3/8" - 4"



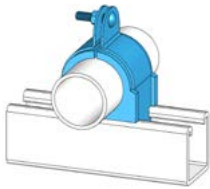
A2558

Pipe Strap for Strut,
HDG/316SS, 1/2" - 6"



AFIGCD

Conduit Clamp, Zinc,
1/2" - 4"



A8500

Cushion Clamp, Zinc/316SS,
1/4"OD - 6 1/8"OD

TROLLEYS & SUPPORT



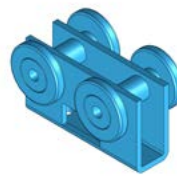
A2521

Two Wheel Plate Trolley,
Zinc



A2522

Four Wheel Plate Trolley,
Zinc



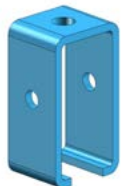
A2524

Four Wheel U Body Trolley,
Zinc



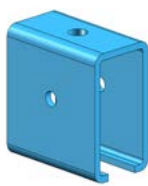
A2525

Two Wheel U Body Trolley,
Zinc



A2528

Trolley Support Splice, Zinc



A2529

Trolley Support Splice Heavy
Duty, Zinc

SPRING NUTS



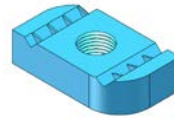
A900RG

Regular Spring, Zinc/HDG/
Aluminum/304SS/316SS,
8-32 - 7/8"



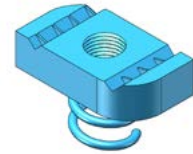
A900RG.M8

Metric Regular Spring,
Zinc/316SS, M6 - M12



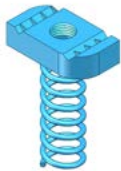
A900NS

No Spring, Zinc/HDG/
Aluminum/304SS/316SS,
1/4" - 7/8"



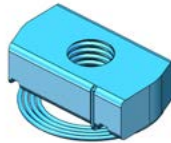
A900SH

Short Spring, Zinc,
1/4" - 7/8"



A900LS

Long Spring, Zinc, 1/4" - 7/8"



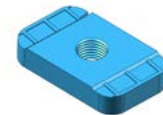
A900TS

Top Spring, Zinc, 1/4" - 1/2"



A6006RG

Mini Regular Spring, Zinc,
8-32 - 1/4"



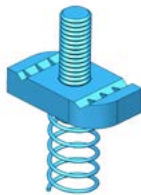
A6006NS

Mini No Spring, Zinc,
8-32 - 1/4"



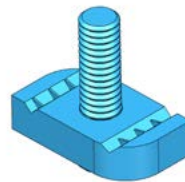
A6006SH

Mini Short Spring, Zinc,
8-32 - 1/4"



J900RGSN

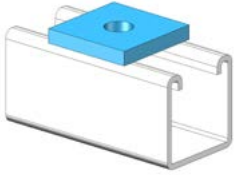
Stud Nut Regular Spring,
Zinc, 1/4" - 1/2"



J900NSSN

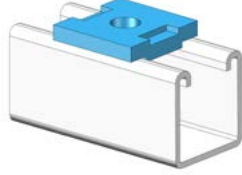
Stud Nut No Spring, Zinc,
1/4" - 1/2"

SQUARE WASHERS



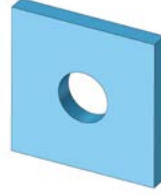
A621

Square Washer, HDG/
Zinc/316SS, 1/4" - 1"



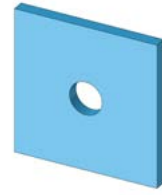
A621NT

No Twist, HDG, 1/4" - 1/2"



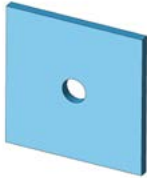
A2X2

2" x 2", HDG, 3/8" - 7/8"



A3X3

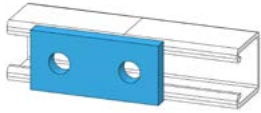
3" x 3", HDG, 3/8" - 7/8"



A4X4

4" x 4", HDG, 3/8" - 7/8"

SPLICING CONNECTIONS



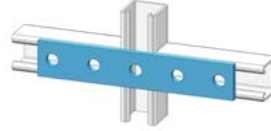
A601

Two Hole Splice Plate, HDG/
Zinc/316SS



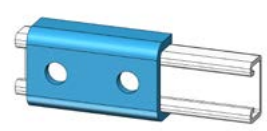
A723

Four Hole Splice Plate,
HDG/Zinc/316SS



A724

Five Hole Splice Plate, HDG



A409U

Two Hole Splice, HDG/Zinc



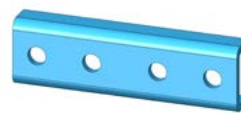
A412U

Three Hole Splice, HDG



A616.13/16

13/16" Four Hole Splice,
HDG



A616.1

1" Four Hole Splice, HDG



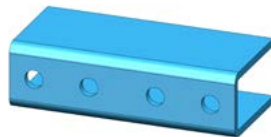
A616.1-5/8

1 5/8" Four Hole Splice,
HDG/Zinc/316SS



A616.2-7/16

2 7/16" Four Hole Splice,
HDG



A616.3-1/4

3 1/4" Four Hole Splice,
HDG



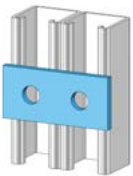
A649.13/16

13/16" U Shape Strut Splice,
Zinc



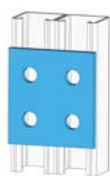
A649.1-5/8

1 5/8" U Shape Strut Splice,
Zinc



A1924

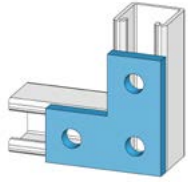
Two Hole Flat Plate (1
5/8"CC), HDG



A504

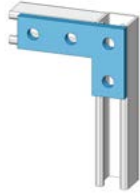
Four Hole Square Flat Plate,
HDG

CORNER CONNECTIONS



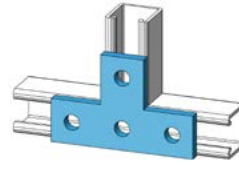
A718

Three Hole Flat Plate, HDG/
Zinc/316SS



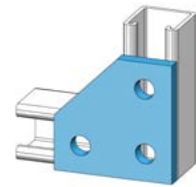
A123P

Four Hole Flat Plate, HDG/
Zinc/316SS



A714

Tee Plate, HDG/Zinc/316SS



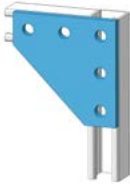
A744

Three Hole Plate, HDG



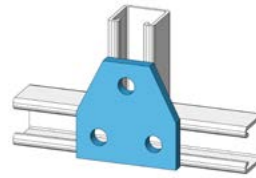
A750

Four Hole Corner Plate,
HDG/316SS



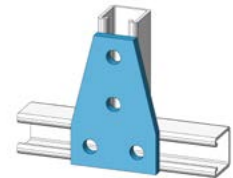
A751

Five Hole Corner Plate,
HDG/316SS



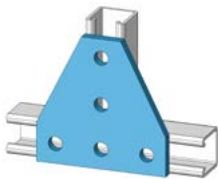
A925

Three Hole Tee Plate, HDG



A747

Four Hole Tee Plate,
HDG/316SS



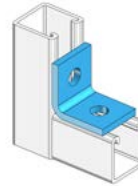
A854

Five Hole Tee Plate,
HDG/316SS



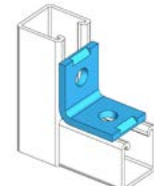
A604

Two Hole Angle, HDG/
Zinc/316SS



A603

Two Hole 90° Fitting, HDG/
Zinc/316SS



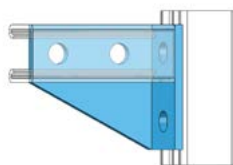
A207A

Two Hole 90° Fitting No
Twist, HDG



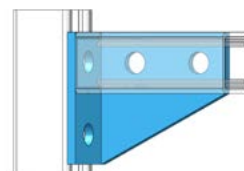
A210A

Three Hole 90° Fitting, HDG/
Zinc/316SS



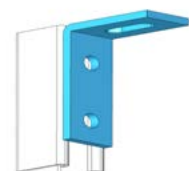
A742

Four Hole Left Angle, HDG



A743

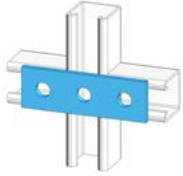
Four Hole Right Angle, HDG



A1747

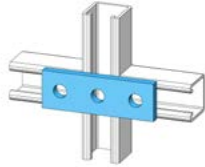
Two Hole Slotted Angle,
HDG

CROSSING CONNECTIONS



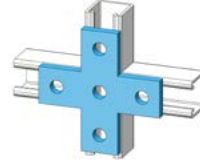
A113P

Three Hole Flat Plate
(1 5/8"CC), HDG



A602

Three Hole Splice Plate,
HDG/Zinc/316SS



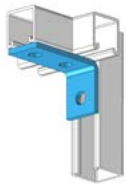
A712

Five Hole Cross Plate,
HDG/316SS



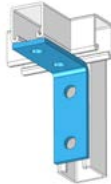
A606

Three Hole Angle Connector,
HDG/Zinc/316SS



A605

Three Hole Angle, HDG/
Zinc/316SS



A607

Four Hole Angle, HDG/
Zinc/316SS



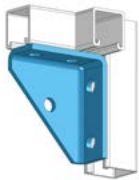
A748

Four Hole Angle Fitting,
HDG/316SS



A230A

Five Hole Angle Fitting, HDG



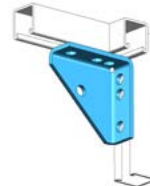
A216A

Five Hole Shelf Bracket Left,
HDG/316SS



A215A

Five Hole Shelf Bracket
Right, HDG/316SS



A608

Universal Shelf Bracket,
HDG/Zinc/316SS



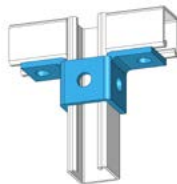
A922L

Two Hole Corner Bracket
Left, HDG



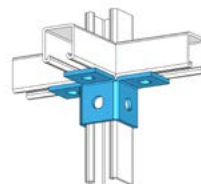
A922R

Two Hole Corner Bracket
Right, HDG



A923

Five Hole Wing Fitting,
HDG/316SS



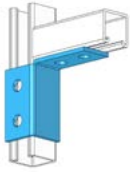
A668

Six Hole Wing Fitting, HDG



A2128L

Four Hole Corner Bracket
Left, HDG



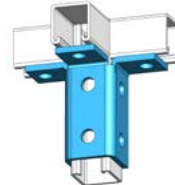
A2128R

Four Hole Corner Bracket
Right, HDG



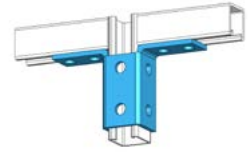
A821

Eight Hole Wing Fitting,
HDG/Zinc/316SS



A670

Nine Hole Wing Fitting, HDG



A913

Ten Hole Wing Fitting, HDG



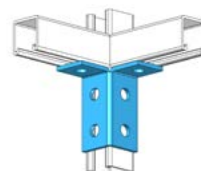
A669

Twelve Hole Wing Fitting,
HDG



A665

Four Hole Corner Fitting,
HDG



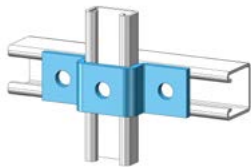
A666

Six Hole Corner Fitting, HDG



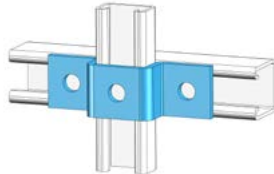
A667

Eight Hole Corner Fitting,
HDG



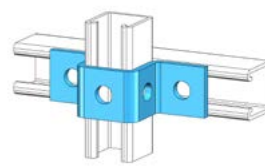
A929

13/16" U Shape Bracket,
HDG



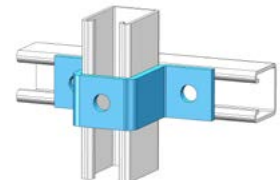
A614

1" U Shape Bracket, HDG



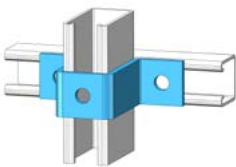
A613

1 5/8" U Shape Bracket Five
Holes, HDG/Zinc/316SS



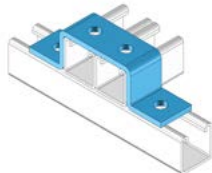
A2648

2 7/16" U Shape Bracket,
HDG



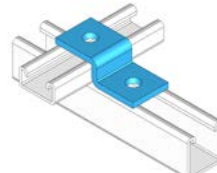
A2649

3 1/4" U Shape Bracket,
HDG



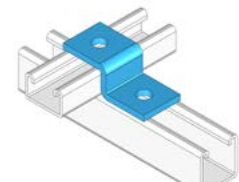
A2650

3 1/4" U Shape Wide
Bracket Horizontal (1 5/8" C
to C Hole Spacing), HDG



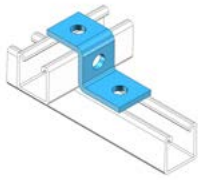
A928

13/16" Z Shape Angle, HDG/
Zinc



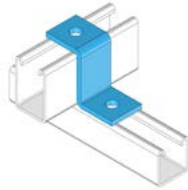
A612

1" Z Shape Angle, HDG/Zinc



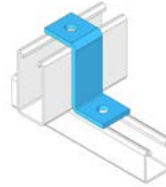
A611

1 5/8" Z Shape Angle Three Holes, HDG/Zinc/316SS



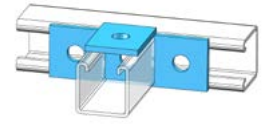
A2601

2 7/16" Z Shape Angle, HDG/Zinc



A2602

3 1/4" Z Shape Angle, HDG/Zinc



A715

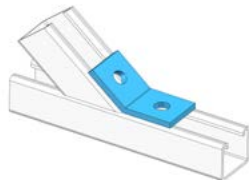
Offset Bent Tee Plate, HDG/316SS

ANGLE CONNECTIONS



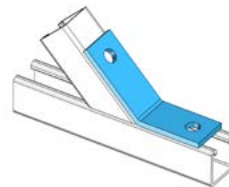
AA2126

1 1/4" x 1 7/16" Two Hole Outside Open Angle 45°, HDG



A632

1 5/8" x 1 3/4" Two Hole Open Short Angle 30°/45°/60°, HDG



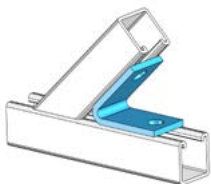
A633

Two Hole Open Angle 30°/45°/60°, HDG/Zinc/316SS



A781

Four Hole Open Angle 30°/45°/60°, HDG/Zinc/316SS



A624

Two Hole Closed Angle 30°/45°/60°, HDG/316SS



A793

Four Hole Closed Angle 30°/45°/60°, HDG/Zinc/316SS



A117P

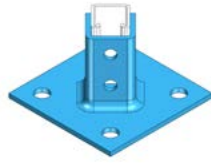
Three Hole Adjustable Plate, HDG

POST BASES



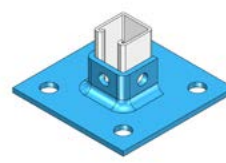
A3033

Single Post Base, HDG/
Zinc/316SS



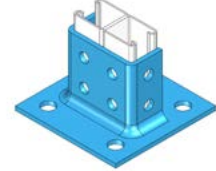
A3033O

Offset Single Post Base,
HDG/Zinc/316SS



A503PB

Single Post Base Short,
HDG/316SS



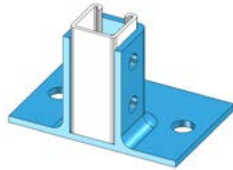
A3064

Double Post Base, HDG/
Zinc/316SS



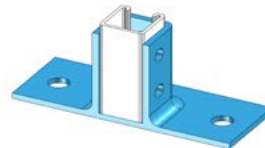
A3064O

Offset Double Post Base,
HDG



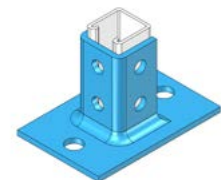
A508PB

Single Post Base Open,
HDG/Zinc/316SS



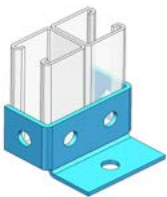
APB200

Single Post Base Open
(8" x 3" Base), HDG



A509PB

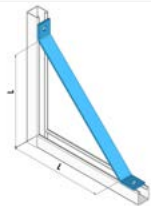
Single Post Base Narrow,
HDG/Zinc/316SS



A505PB

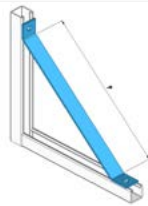
Double Post Base Mount,
HDG

BRACES & HINGES



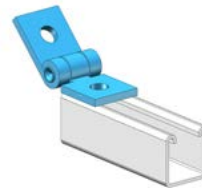
A926

Knee Brace, HDG/316SS,
12" - 36"



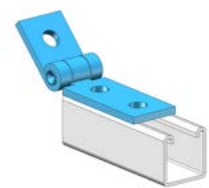
A926LPI

Knee Brace (LPI), HDG,
12" - 36"



A1843

Two Hole Adjustable Hinge
Fitting, HDG/Zinc



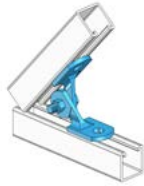
A1354A

Three Hole Adjustable Hinge
Fitting, HDG/Zinc



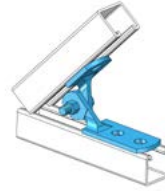
A1354

Four Hole Adjustable Hinge Fitting, HDG/Zinc



AR292A

Two Hole Adjustable Hinge, HDG/Zinc/316SS



AR293A

Three Hole Adjustable Hinge, HDG/Zinc/316SS



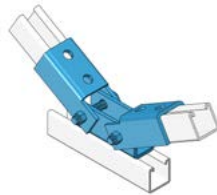
AR294A

Four Hole Adjustable Hinge, HDG/Zinc/316SS



AR298A

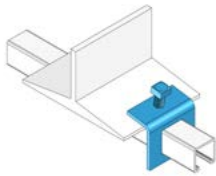
Adjustable Single Channel Brace, HDG



AR299A

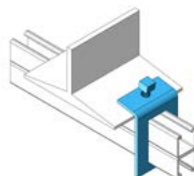
Adjustable Double Channel Brace, HDG

BEAM CLAMPS



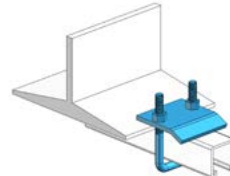
A855

Window Beam Clamp, HDG/Zinc/316SS



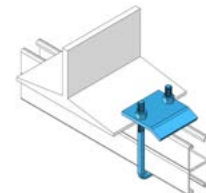
A855D

Window Beam Clamp Deep, HDG/316SS



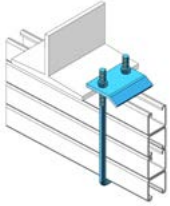
A2652

U Bolt Beam Clamp, HDG/Zinc/ALL HDG/316SS



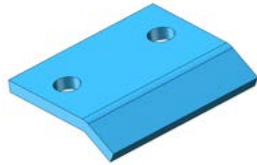
A2651

U Bolt Beam Clamp Deep, HDG/Zinc/ALL HDG/316SS



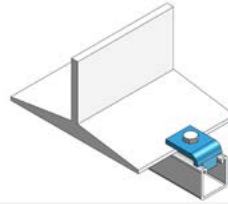
A2653

U Bolt Beam Clamp Double Deep, HDG



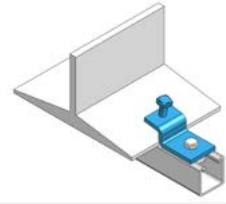
A2651.PLATE

Plate Only, HDG



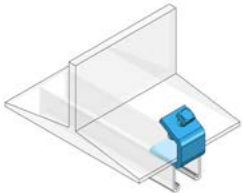
A686

Flange Strut Beam Clamp, HDG/Zinc/316SS



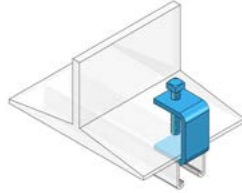
A685

Z Shape Beam Clamp, HDG/Zinc/316SS



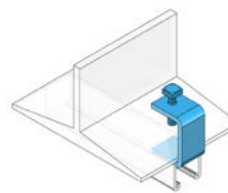
A907A

Strut Beam Clamp 1" Opening, HDG/316SS



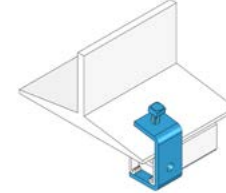
A907B

Strut Beam Clamp 1 1/2" Opening, HDG/316SS



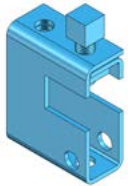
A907C

Strut Beam Clamp 2 1/8" Opening, HDG/316SS



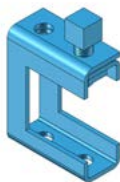
A684

Strut Beam Clamp 2 1/2" Opening, HDG/316SS



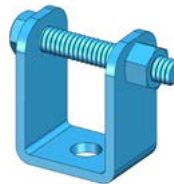
A2622HD.7/8

Strut Beam Clamp 7/8" Opening, HDG/316SS



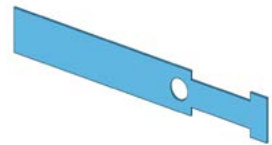
A2622HD.1-21/32

Strut Beam Clamp 1 21/32" Opening, HDG



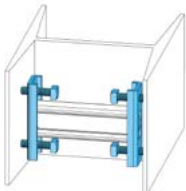
A2623

Strut Clevis Hanger, HDG



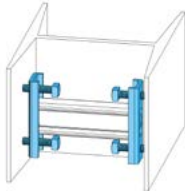
A2622

Safety Strap, Pre-Galv, 9" - 20"



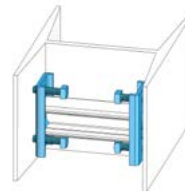
A954BC.13/16

13/16" Column Insert, Zinc



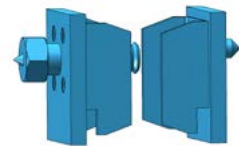
A954BC.1

1" Column Insert, Zinc



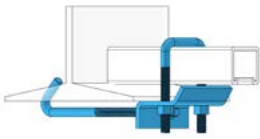
A954BC

1 5/8" Column Insert, HDG/Zinc/316SS



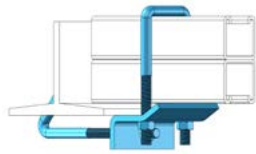
ABC23

Column Insert Square, Zinc



A948SBC

J Hook Beam Clamp, Zinc,
6" - 14"



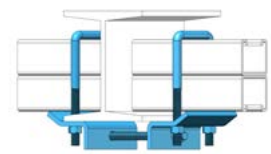
A948LBC

J Hook Beam Clamp Deep,
Zinc, 6" - 14"



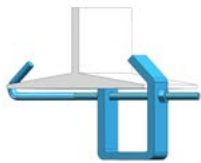
A949SBC

J Hook Beam Clamp Double,
Zinc, 6" - 14"



A949LBC

J Hook Beam Clamp Double
Deep, Zinc, 6" - 14"



A997BC

J Hook Beam Clamp Heavy
Duty, HDG

BRACKETS



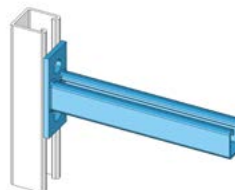
A708

Channel Support Bracket,
HDG/316SS



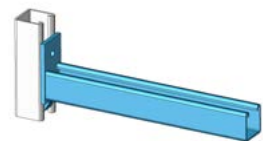
A709

Channel Support Bracket
Double, HDG



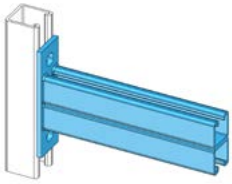
A651

Single Channel Support
Bracket, HDG/316SS,
6" - 24"



A600B

Single Interlocking Bracket,
HDG, 8" - 24"



A809

Double Channel Support Bracket, HDG/316SS, 6" - 36"



A3282

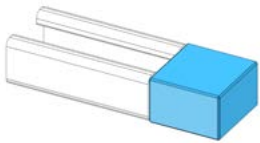
Cantilever Wall Bracket, HDG/316SS, 8 1/2" - 38 1/2"



A690B

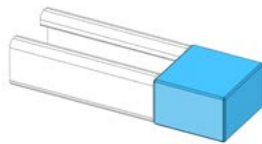
Shelf Bracket, HDG, 8" - 24"

ELECTRICAL & RACEWAY FITTINGS



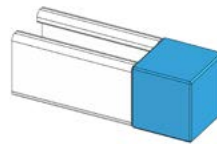
A655P.13/16

13/16" Channel End Cap, Plastic



A655P.1

1" Channel End Cap, Plastic



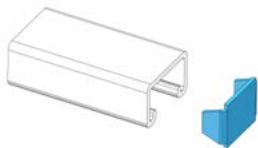
A655P.1-5/8

1 5/8" Channel End Cap, Plastic



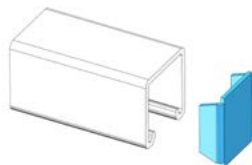
A655.13/16

13/16" Channel End Cap, Zinc/316SS



A655.1

1" Channel End Cap, Zinc/316SS



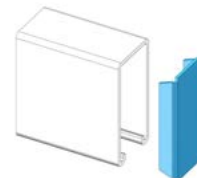
A655.1-5/8

1 5/8" Channel End Cap, Zinc/316SS



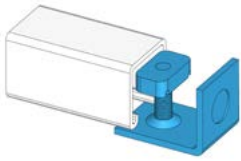
A655.2-7/16

2 7/16" Channel End Cap, Zinc



A655.3-1/4

3 1/4" Channel End Cap, Zinc



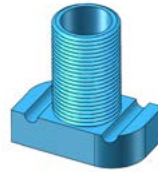
A2511

End Cap with Knockout,
Zinc, 1/2" - 3/4"



A2636

Fixture Stud Nut, Zinc



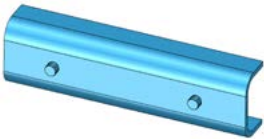
A2625

Wiring Stud Nut, Aluminum



A2632

Strut Channel Hanger, Zinc



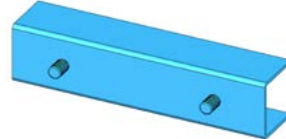
A641

13/16" Internal Splice, Zinc



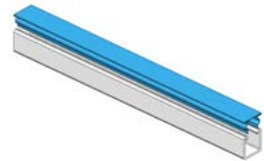
A642

1" Internal Splice, Zinc



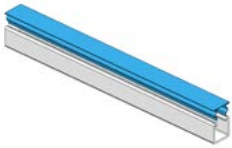
A643

1 5/8" Internal Splice, Zinc



A707PL

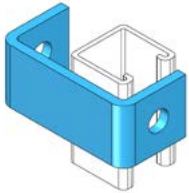
Closure Strip, Plastic



C707

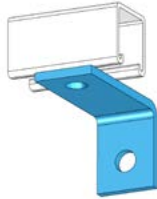
Closure Strip, Zinc

OFFSET CONNECTIONS & OTHERS



A402U

Clevis Connector, HDG,
4" - 8"



A208

Offset Connector, HDG,
3" - 4"



AFIGSWMF

SWMF Swivel Male To
Female, Zinc, 3/8" - 1/2"



AFIGSWFF

SWFF Swivel Female To
Female, Zinc, 3/8" - 1/2"



A52.13/16

13/16", Concrete Insert
Anchor Cap, Zinc



A52.1

1", Concrete Insert
Anchor Cap, Zinc



A52.1-5/8

1 5/8", Concrete Insert
Anchor Cap, Zinc

PIPE HANGERS & SUPPORTS

BEAM CLAMPS

CLEVIS HANGERS

SWIVEL RING/LOOP HANGERS

RISER & PIPE CLAMPS

CPVC CLAMPS

THREADED ACCESSORIES

ATTACHMENTS

PIPE STAYS & STRAPS

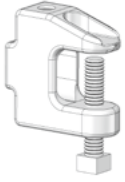
PIPE ROLLER & SUPPORTS

SEISMIC PROTECTION

OTHER PRODUCTS

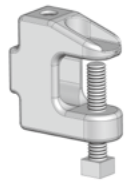


BEAM CLAMPS



AFIGBC26

1/4" Beam Clamp, Zinc



AFIGBC26H

1/4" Beam Clamp, HDG



AFIGBC

BC Beam Clamp, Powder Coated



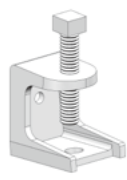
AFIGBC200

Steel Beam Clamp, Zinc, 1/4" - 3/8"



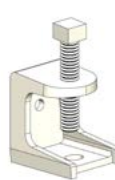
AFIGBC200SS6

Steel Beam Clamp, 316SS, 1/4" - 3/8"



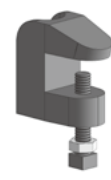
AFIG405Z

Insulator Beam Clamp, Zinc, 1/4" - 1/2"



AFIG405SS6

Insulator Beam Clamp, 316SS, 1/4" - 1/2"



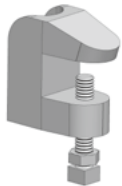
AFIG406

Small Mouth Beam Clamp, Plain, 3/8" - 7/8"



AFIG406Z

Small Mouth Beam Clamp, Zinc, 3/8" - 7/8"



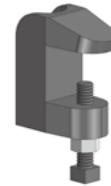
AFIG406H

Small Mouth Beam Clamp, HDG, 3/8" - 7/8"



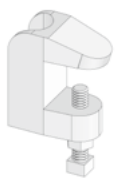
AFIG406SS6

Small Mouth Beam Clamp, 316SS, 3/8" - 7/8"



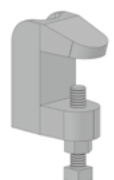
AFIG407

Wide Mouth Beam Clamp, Plain, 3/8" - 3/4"



AFIG407Z

Wide Mouth Beam Clamp, Zinc, 3/8" - 3/4"



AFIG407H

Wide Mouth Beam Clamp, HDG, 3/8" - 1/2"



AFIG407SS6

Wide Mouth Beam Clamp, 316SS, 3/8" - 1/2"



AFIG201

Stamped C Clamp, Plain



AFIG201Z

Stamped C Clamp, Zinc,
3/8" - 3/4"



AFIG201SS6

Stamped C Clamp, 316SS,
3/8" - 1/2"



AFIG301

Malleable C Clamp, Plain,
3/8" - 3/4"



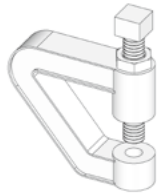
AFIG301Z

Malleable C Clamp, Zinc,
3/8" - 3/4"



AFIG404

Purlin Clamp, Plain



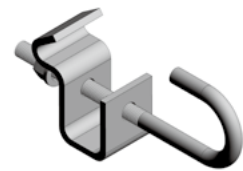
AFIG404Z

Purlin Clamp, Zinc



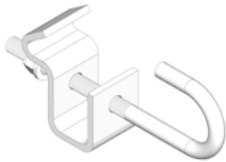
AFIGSBC

Stamped Beam Clamp Top
Mount, Zinc



AFIG159

Adjustable Rod Beam
Clamp, Plain, 3/8" - 5/8"



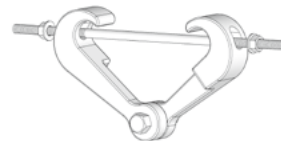
AFIG159Z

Adjustable Rod Beam
Clamp, Zinc, 3/8" - 5/8"



AFIG410

Center Beam Clamp, Plain



AFIG410Z

Center Beam Clamp, Zinc



AFIGRA

Right Angle Clamp, HDG,
1/2" - 4"



AFIG416

Retaining Strap, Zinc,
6" - 12"



PFIG35RS

Two Hole Retaining Strap*,
Zinc, 6" - 18" Length,
3/8" - 7/8" Rod Size

*Two hole only for 3/8" & 1/2" rod size

CLEVIS HANGERS



AFIG24

Standard Clevis Hanger,
Plain, 1/2" - 18"



AFIG24Z

Standard Clevis Hanger,
Zinc, 1/2" - 36"



AFIG24H

Standard Clevis Hanger,
HDG, 1/2" - 18"



PFIG24SS4

Standard Clevis Hanger,
304SS, 1/2" - 30"



PFIG24SS6

Standard Clevis Hanger,
316SS, 1/2" - 10"



AFIG22Z

Light Duty Clevis Hanger,
Zinc, 1/2" - 8"



AFIG52

Clevis Hanger, Copper
Epoxy, 1/2" - 6"



AFIG52CP

Clevis Hanger, Copper
Plated, 1/2" - 6"



AFIG27AC

AWWA Ductile Clevis
Hanger, Plain, 4" - 16"



AFIG27ACZ

AWWA Ductile Clevis
Hanger, Zinc, 4" - 12"



AFIG25

MJ Hanger, Plain, 2" - 6"



AFIG25Z

MJ Hanger, Zinc, 2" - 6"

SWIVEL RING/LOOP HANGERS



AFIG41

Swivel Ring Hanger, Pre-Galv, 1/2" - 8"



AFIG41SS4

Swivel Ring Hanger, 304SS, 1/2" - 8"



AFIG41SS6

Swivel Ring Hanger, 316SS, 1/2" - 8"



AFIG42

Swivel Ring Hanger, Copper Epoxy, 1/2" - 8"



AFIG42CP

Swivel Ring Hanger, Copper Plated, 1/2" - 8"



AFIG43

Swivel Ring Hanger, Black Epoxy, 1/2" - 8"



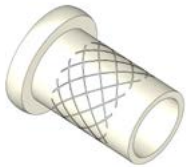
AFIG418

J Hanger, Zinc, 1/2" - 8"



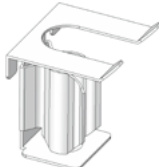
AFIG41A

Swivel Nut, Zinc, 3/8" - 1/2"



AFIG41ASS6

Swivel Nut, 316SS, 3/8" - 1/2"



PFIG055

Surge Restraint, Powder Coated

RISER & PIPE CLAMPS



AFIG82

Riser Clamp, Plain,
1/2" - 12"



AFIG82Z

Riser Clamp, Zinc, 1/2" - 30"



AFIG82H

Riser Clamp, HDG,
3/4" - 12"



PFIG82SS4

Riser Clamp, 304SS,
1/2" - 30"



PFIG82SS6

Riser Clamp, 316SS,
1/2" - 10"



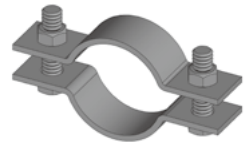
AFIG85

Riser Clamp, Copper Epoxy,
1/2" - 6"



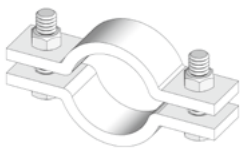
AFIG85CP

Riser Clamp, Copper Plated,
1/2" - 6"



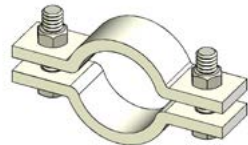
AFIG31

Two Bolt Pipe Clamp, Plain,
1/2" - 12"



AFIG31Z

Two Bolt Pipe Clamp, Zinc,
1/2" - 12"



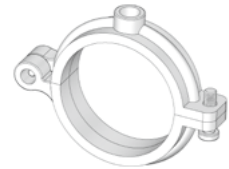
PFIG31SS6

Two Bolt Pipe Clamp,
316SS, 1/2" - 12"



AFIG38

Split Ring Hanger, Plain,
3/8" - 4"



AFIG38Z

Split Ring Hanger, Zinc,
3/8" - 4"



AFIG38SS6

Split Ring Hanger, 316SS,
3/8" - 4"



AFIG38C

Split Ring Hanger, Copper
Epoxy, 3/8" - 4"



AFIG38CP

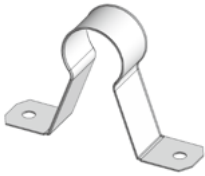
Split Ring Hanger, Copper
Plated, 3/8" - 4"



AFIG4300

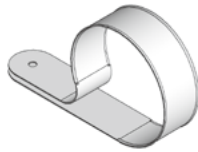
Two Bolt Rubber Lined
Clamp, Zinc, 1/4" - 4"

CPVC CLAMPS



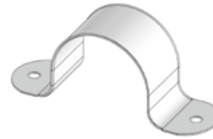
PFIGSOSR

Stand Off Two Hole Strap,
Zinc, 3/4" - 2"



PFIG107

Wraparound Strap For
CPVC, Zinc, 3/4" - 2"



PFIG108

Two Hole Strap For CPVC,
Zinc, 3/4" - 2"



PFIG109

Side Mount Strap For CPVC,
Zinc, 3/4" - 2"

THREADED ACCESSORIES



AFIG14

Standard U Bolt, Plain,
1/2" - 24"



AFIG14Z

Standard U Bolt, Zinc,
1/2" - 24"



AFIG14H

Standard U Bolt, HDG,
1/2" - 24"



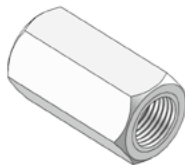
AFIG14SS6

Standard U Bolt, 316SS,
1/2" - 24"



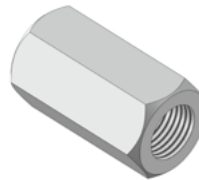
AFIG60WZ

Coach Screw Rod, Zinc,
3/8": 3" - 12"
1/2": 4" - 8"



AFIG62

Rod Coupling, Zinc,
1/4" - 3/4"



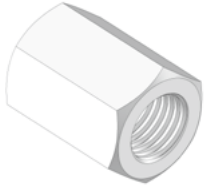
AFIG62H

Rod Coupling, HDG,
1/4" - 1/2"



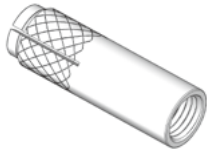
AFIG62SS6

Rod Coupling, 316SS,
1/4" - 1/2"



PF105

Reducing Rod Coupling,
Zinc, 3/8" - 7/8"



PF47S

Drop In Concrete Anchor,
Zinc, 3/8" - 5/8"



AF63

Forged Steel Clevis, Plain,
3/8" - 1 1/2"



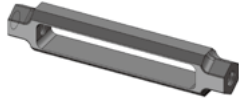
AF64

Weldless Eye Nut, Plain,
3/8" - 1 1/2"



AF65

Eye Socket (casting), Plain,
1/4" - 7/8"



AF68

Turnbuckle, Plain,
1/4" - 1 1/2"



AF114

Turnbuckle Adjuster, Plain,
3/8" - 1/2"



AF411

Extension Piece, Plain,
3/8" - 7/8"



AF411Z

Extension Piece, Zinc,
3/8" - 7/8"

ATTACHMENTS



AFIG115

45° Bracing Attachment,
Zinc



AFIGQD

Q Deck Hanger, Aluminum,
1/4" - 1/2"



AFIGCF

Ceiling Flange, Aluminum,
1/4" - 1/2"



AFIG37

Steel Eye Socket, Zinc,
3/8" - 1/2"



AFIG370

Offset Steel Eye Socket,
Zinc



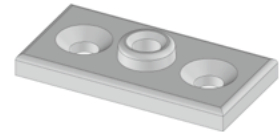
AFIG28

Ceiling Flange, Plain,
1/4" - 1/2"



AFIG28Z

Ceiling Flange, Zinc,
1/4" - 1/2"



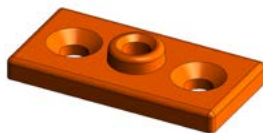
AFIG28H

Ceiling Flange, HDG,
1/4" - 1/2"



AFIG28SS6

Ceiling Flange, 316SS,
1/4" - 1/2"



AFIG28C

Ceiling Flange, Copper
Epoxy, 1/4" - 1/2"



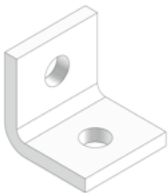
AFIG28CP

Ceiling Flange, Copper
Plated, 1/4" - 1/2"



PFIG945

Steel Ceiling Plate, Zinc



AFIGA350

Side Beam Bracket, Zinc,
3/8" - 1/2"



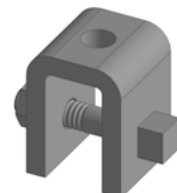
AFIG327

Side Beam Attachment,
Plain, 3/8" - 1/2"



AFIG327Z

Side Beam Attachment,
Zinc, 3/8" - 1/2"



AFIG66

Welded Beam Attachment
w/ Bolt & Nut, Plain,
3/8" - 1 1/4"



AFIG67

Welded Beam Attachment
w/o Bolt & Nut, Plain,
3/8" - 1 1/4"

PIPE STAYS & STRAPS



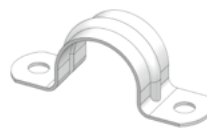
AFIG44E

EMT One Hole Pipe Strap,
Zinc, 1/2" - 2"



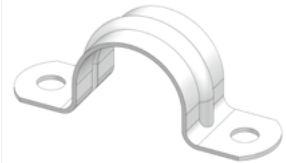
AFIG44

RIGID One Hole Pipe Strap,
Zinc, 3/8" - 2"



AFIG45E

EMT Two Hole Pipe Strap,
Zinc, 1/2" - 2"



AFIG45

RIGID Two Hole Pipe Strap,
Zinc, 1/4" - 6"



AFIG45SS6

Two Hole Pipe Strap,
316SS, 1/2" - 6"



AFIG45C

Two Hole Pipe Strap,
Copper Epoxy, 1/4" - 2"



AFIG32S

Standard Pipe Stay, Black
Epoxy, 3/8" - 2"



AFIG32SSS6

Standard Pipe Stay, 316SS,
3/8" - 2"



AFIG32E

Extended Pipe Stay, Black Epoxy, 3/8" - 1 1/4"



AFIG32ESS6

Extended Pipe Stay, 316SS, 3/8" - 1 1/4"



AFIG32D

Double Pipe Stay, Black Epoxy, 3/8" - 3/4"



AFIG129

Bell Hanger, Copper Epoxy, 1/2" - 2"



AFIG1276

One Hole Malleable Clamp, Zinc, 1/2" - 2"

PIPE ROLLER & SUPPORTS



AFIG92

Long Pipe Roll, Plain, 2" - 20"



AFIG93

Clevis Roller Hanger, Plain, 2" - 20"

SEISMIC PROTECTION



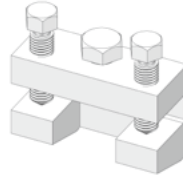
PFIG020

Rod Swivel Attachment, Zinc



PFIGSB030

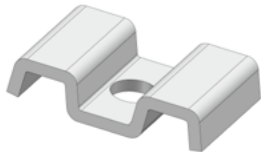
C Clamp Structural Attachment, Zinc



PFIGSB035

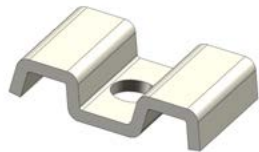
Sway Brace Bar Joist Adapter, Zinc

OTHER PRODUCTS



AFIGGCS037H

Grating Clip Saddle, HDG



AFIGGCS037SS6

Grating Clip Saddle, 316SS



AFIG501Z

Stud Plate, Zinc, 3" - 8"



ASA.1/2X3

Concrete Sleeve Anchor, Zinc



Aiming to Build a Better Future

Tel: 1-855-701-5995 / 416-431-6565

Fax: 1-855-701-5994 / 416-438-8980

Email: info@aimcointl.com

60 North Wind Place, Toronto, Ontario, Canada, M1S 5 L4

www.aimcointl.com