

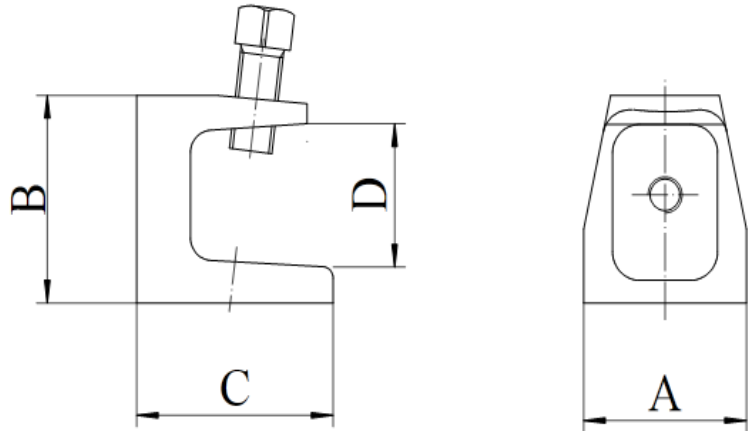
<b>A-405Z</b>	<b>Zinc</b>
<b>A-405SS</b>	<b>SS</b>

## INSULATOR ELECTRICAL BEAM CLAMP

**FUNCTION:** Designed for attaching hanger rod to beam or framework where thickness does not exceed 1 1/8". Rod tap on both bottom and back of the clamp.

**MATERIAL:** Available in Malleable Iron and Stainless Steel

**FINISH:** Available in Zinc Electro-Galvanized and Stainless Steel



Rod Size A	Specification Data				Rec. Max. Load (lbs.)	Approx. Wt. Per 100 (lbs.)
	A	B	C	D		
<b>1/4</b>	1 3/16	1 3/8	1 3/8	3/4	335	23
<b>5/16</b>	1 3/16	1 3/8	1 3/8	3/4	335	23
<b>3/8</b>	2 1/16	1 3/4	1 7/8	1	525	65
<b>1/2</b>	2 3/8	2 1/8	2 3/8	1 1/8	1000	107

This specification sheet is for reference only. Aimco International Group Corp. reserves the right to make changes to the design without prior notice.