

A-FIG 63	Plain
A-FIG 63Z	Zinc
A-FIG 63H	HDG

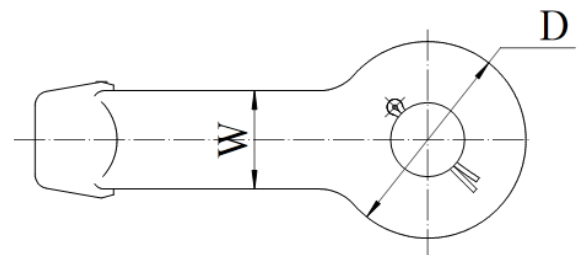
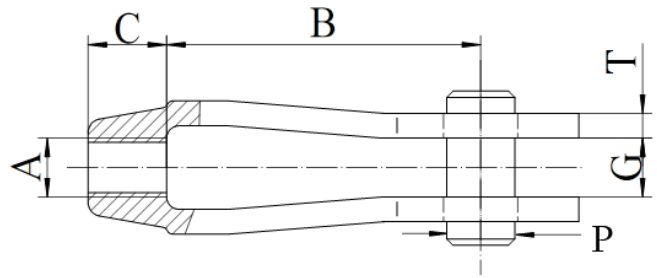
FORGED STEEL CLEVIS

FUNCTION: Designed for use as a convenient method of connecting hanger rod to pipe lugs, angles. Designed for use on high temperature piping installations.

APPROVALS: Complies with Manufactures' Standardization Society (MSS) SP-58 & SP-69 (Type 14). Complies with Federal Specifications A-A-1192A (Type 14).

MATERIAL: Forged Steel

FINISH: Available in Plain, Zinc Electro-Galvanized, Hot-Dip Galvanized



Rod Size A	Clevis Size No.	Specification Data							Rec. Max. Load 343°C (lbs.)	Rec. Max. Load 399°C (lbs.)	Approx. Wt. Each (lbs.)
		B	C	D	Grip G	Pin Dia. P	T	W			
3/8	2	3 9/16	5/8	1 7/16	1/2	1/2	5/16	1 1/16	730	572	1
1/2	2	3 9/16	5/8	1 7/16	1/2	5/8	5/16	1 1/16	1350	1055	1
5/8	2	3 9/16	5/8	1 7/16	5/8	3/4	5/16	1 1/16	2160	1690	1.1
3/4	2 1/2	4	1	2 1/2	3/4	7/8	5/16	1 1/4	3230	2530	2.3
7/8	2 1/2	4	1	2 1/2	7/8	1	5/16	1 1/4	4480	3508	2.5
1	3	5 1/16	1 1/4	3	1	1 1/8	1/2	1 1/2	5900	4620	5.1
1 1/4	3	5 1/16	1 1/4	3	1 1/4	1 3/8	1/2	1 1/2	9500	7440	5.6
1 1/2	3 1/2	6	1 1/2	3 1/2	1 1/2	1 5/8	1/2	1 3/4	13800	10807	8.1
1 3/4	4	6	1 3/4	4	1 1/2	1 7/8	1/2	2	18600	14566	12.9
2	5	7	2 1/4	5	2 1/2	2 1/4	5/8	2 1/2	24600	19265	23
2 1/4	6	8	2 3/4	6	2 1/2	2 1/2	3/4	3	32300	25295	35
2 1/2	6	8	2 3/4	6	2 1/2	2 3/4	3/4	3	39800	31169	36
2 3/4	7	9	3	7	2 1/2	3	7/8	3 1/2	49400	38680	50
3	7	9	3	7	2 1/2	3 1/4	7/8	3 1/2	60100	47066	51
3 1/4	8	10	4	8	4	3 1/2	1 1/2	4	71900	56300	116
3 1/2	8	10	4	8	4	3 3/4	1 1/2	4	84700	66330	118
3 3/4	8	10	4	8	4	4	1 1/2	4	98500	77139	120
4	8	10	4	8	4	4 1/4	1 1/2	4	113400	88805	122

This specification sheet is for reference only. Aimco International Group Corp. reserves the right to make changes to the design without prior notice.